

# PRIDE

Hotel, Casino &  
Entertainment  
Carpets







# WELCOME

Pride Carpets and Casino Carpets offer value-oriented, performance-based pattern carpet and no-cost consulting services to those in hotel, casino, resort, restaurant and other commercial pattern-related environments. We strive to be the leading “go-to guys” for the hospitality industry, working with designers, architects, facilities managers, executives and owners seeking the information, expertise and solutions required to improve a property’s visual effect, performance and bottom-line costs. Our sister companies, Pride Carpets and Casino Carpets, operate with a philosophy that ties our success to that of our clients. To that end, we view ourselves as long-term partners, striving to help our clients reach and exceed their objectives.

## CONTENTS

---

|         |   |
|---------|---|
| WELCOME | 1 |
|---------|---|

---

|             |   |
|-------------|---|
| OUR FOUNDER | 3 |
|-------------|---|

---

|                        |   |
|------------------------|---|
| ARTICLE: DESIGN TRENDS | 5 |
|------------------------|---|

---

|                                  |   |
|----------------------------------|---|
| CARPET PATTERNS: QUICK REFERENCE | 7 |
|----------------------------------|---|

---

|                 |    |
|-----------------|----|
| CARPET PATTERNS | 11 |
|-----------------|----|

---

|                                    |     |
|------------------------------------|-----|
| ARTICLE: PROPER CARPET MAINTENANCE | 151 |
|------------------------------------|-----|

---



# OUR FOUNDER

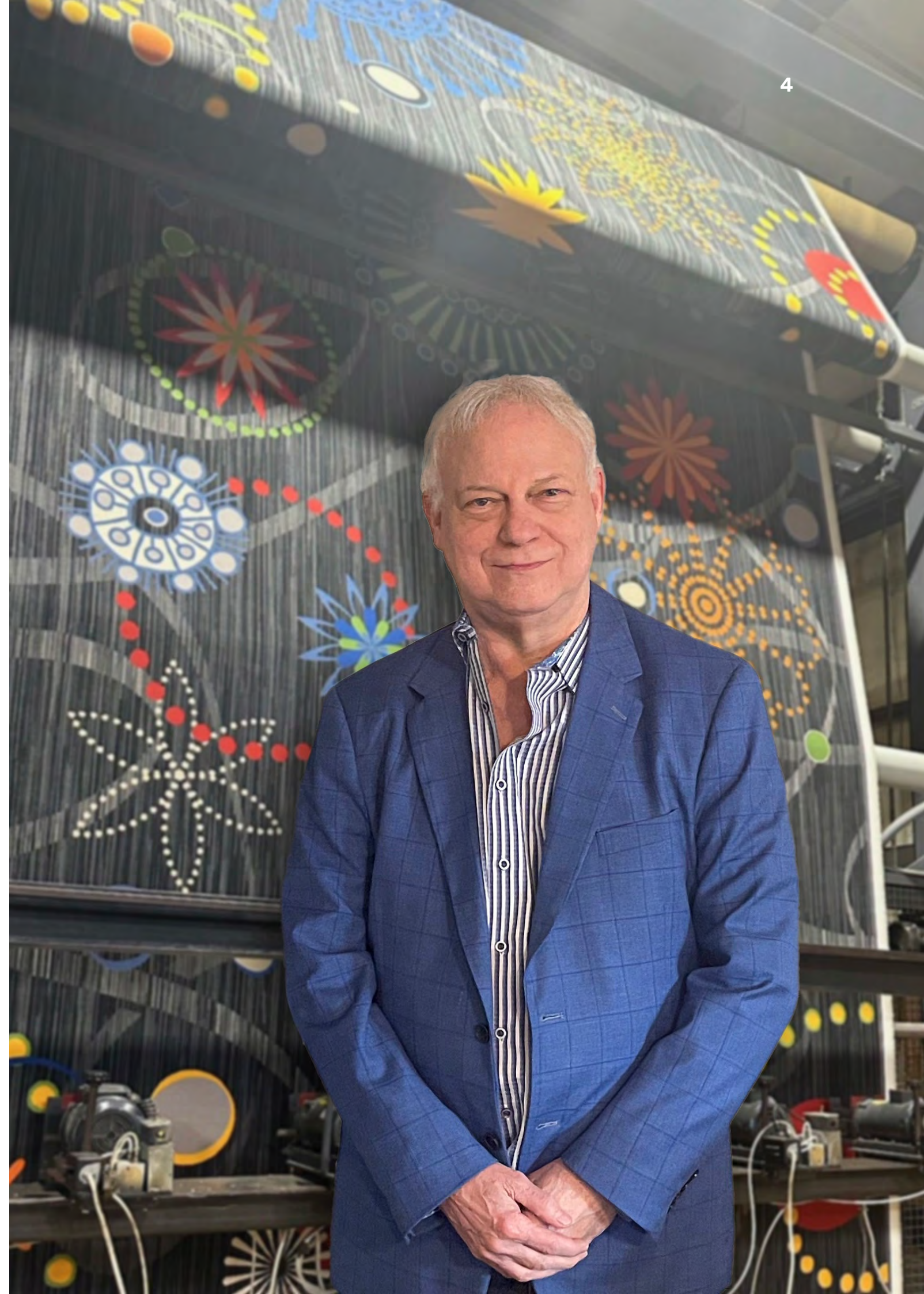
Tony Wideen, President of Pride Carpets and Casino Carpets, has a unique understanding of the facility and management needs of the gaming industry. He worked in the hospitality industry for more than 45 years, spending 11 years working at various hotel properties in Las Vegas where he saw first-hand the problems that every property faced. He moved into a specialized role as an interior designer with his company Anthony & Associates, then as a multi-line casino carpet sales representative for 15 years. Tony went on to become the Western Regional Vice President of Sales of the largest carpeting manufacturer serving the hospitality industry.

## COMPANY VISION

***We're taking the online carpet industry to a new and personal level with unique designs, custom capabilities, and the only stocked carpet patterns in the industry. We're utilizing incredible technology to produce our carpets and offering them with extremely competitive pricing.***

***No questions, no attitude, just satisfied customers.***

Tony's background in interior design gave him an edge in assisting in product design and development. Growing up in Las Vegas and working in hotels made him uniquely equipped to research and recommend innovative products in order to achieve the best results for his customers. He became highly regarded in the industry for his vast knowledge of textiles, patterns and various types of carpet construction, as well as his ability to think outside the box.





## DESIGN TRENDS & THE FUTURE IN GAMING CARPETS

**By Tony Wideen**

Today in the world of hotel and casino carpets there are many more options than only 10 years ago. New technology in carpet manufacturing equipment and improved fibers continue to evolve allowing much greater creativity which has changed the way casino architects, designers & gaming properties think about their carpet needs. The great recession forced properties to look more at costs and value in their renovations or new construction.

You now have three options in pattern carpets. Die injected carpets using nylon from DuPont or Monsanto chemical companies. Axminster woven 80/20 wool blends & solution dyed nylons that are virtually 100% stain proof carpets. Solution dyed carpets are gaining ground quickly with both pros and cons in their use.

Pros of solution dyed nylon is essentially it's stain proof, which is vastly different than the words stain resistant. Think of solution dyed nylon the following way vs. traditional nylon... Normal fiber is white like a radish inside and dyed with color using various methods. Solution dyed nylon is like a carrot in that the color is put into nylon during the fiber's liquid state. It's then made with pre-colored nylon. Like a carrot, when cut in half the color is throughout and can't be taken out in any way. You can pour a bottle of bleach right on it and it won't create a bleached out spot like any carpet that is dyed. These carpets, while excellent in any casino application, are a natural for heavy soil areas like restaurants. The cons are a maximum of six colors can be used and limitation on colors available is around 125 colors. Solution dyed is growing continuously in the gaming market. It's a simple question of design flexibility vs. maximum performance.

Pattern repeats have improved dramatically with properties now doing large repeats that are virtually unlimited. Past designs were 3 ft. x 3 ft. repeats. Certainly the biggest trend in pattern carpet is that you can now create designs to have bigger medallions and the latest look is large pattern repeats with smaller elements within the repeats. This new freeform organic look can create any size repeat such as 12 ft. x 12 ft. or even combining one roll of carpet to match a second differently designed roll that creates 24 ft. x 12 ft. patterns. All casinos and other areas such as restaurants or meeting rooms should always have the carpet scale work correctly within the room size. Be aware that a large repeat should be used to the scale of your particular room. Native American casinos are now as large as many Vegas properties, but medium or boutique properties should stick with midsize repeats. Patterns could be made exactly the same design in 3 ft., 4 ft., 6 ft., and 12 ft. repeats.

In hotel guest rooms which are gradually being built or added to many Native casinos, new technology can produce large scale multi-level loop and cut pile combination with full room repeats that create somewhat of a sculptured look. Solution dyed nylon is now used in 98% of guest room carpets, from Best Westerns to Four Seasons.

Borders are another big change, as we see less of them all the time. Today, borders are out completely from both a practical and visual way. Seams splitting cause shorter replacement time, extra yardage of carpet and they are simply overdone by designers. We're now seeing few borders unless truly necessary. Even hotel corridors have gotten away from area rug types of bordered looks. Manufacturers are coming out with more random type corridor looks or putting in broadloom carpet.

Theming of properties has also left us a bit. More contemporary free flowing patterns with organic looks are in, but one can go too far. You can't theme a 3000-room pyramid as the Luxor did inside. Living just two miles behind it, I should know. Caesars Palace is an example of sticking with a theme and making it cool as well. Each property must decide for themselves, but I believe Native American Casinos should stick with the theme that works best in their geographical area and tribal beliefs. Theming is not out completely and never will be. You can have both a theme and be hip by simply being a bit more subtle on your themed design.

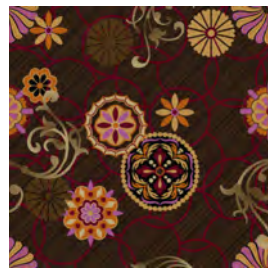
Color trends have classic red or various shades of it coming back. Black or grouping of pattern and blending colors are still hot as background. All colors POP against black. The more blends of color, the more dirt is hidden. The new blends may have a second layer of color which hides soiling extremely well compared to solids.

In the future, look for more of the same, large pattern repeats, more colors and the amount one can use with solution dyed nylon. Continued technology from tufted and woven machine companies to speed the manufacturing process as well as fiber manufacturers will lead the way.





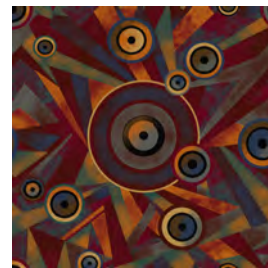
## CARPET PATTERNS: QUICK REFERENCE



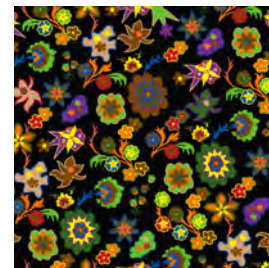
11



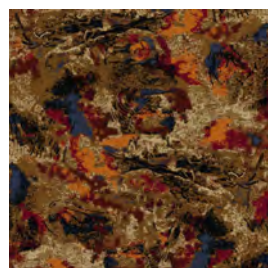
13



15



17



19



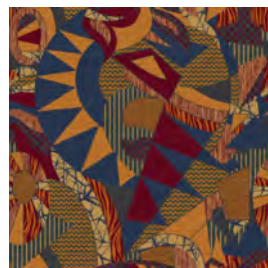
21



23



25



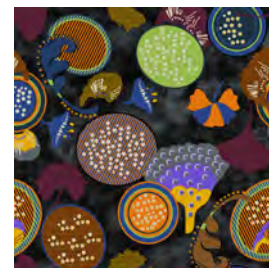
27



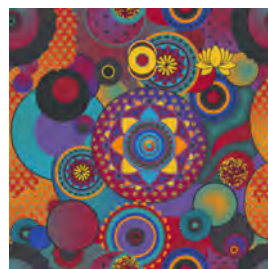
29



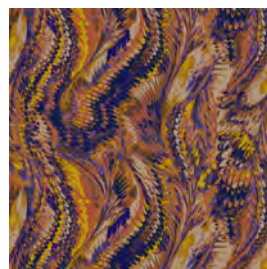
31



33



35



37



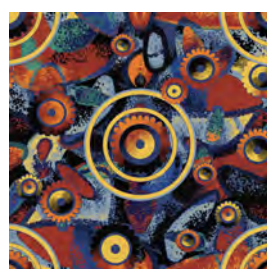
39



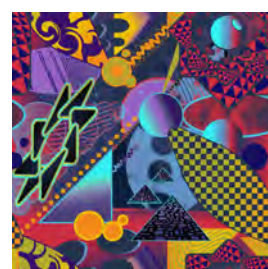
41



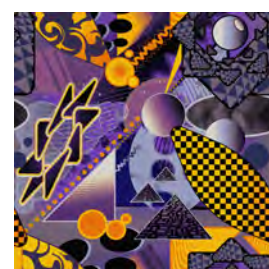
43



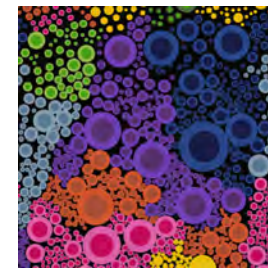
45



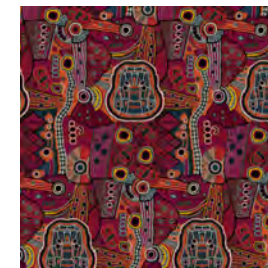
47



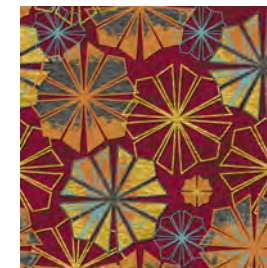
49



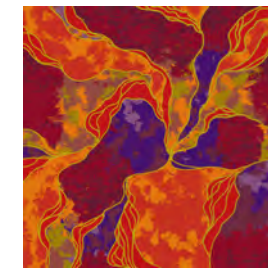
51



53



55



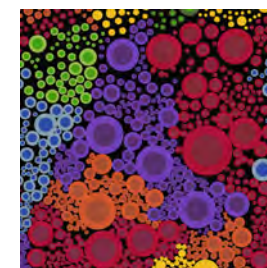
57



59



61



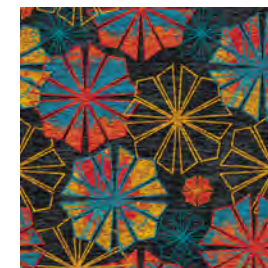
63



65



67



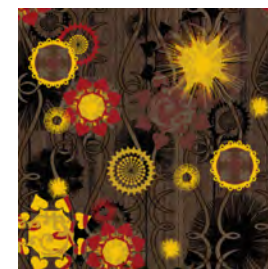
69



71



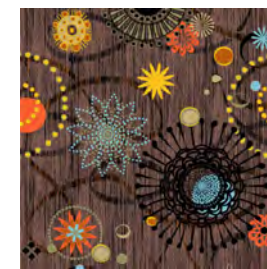
73



75



77



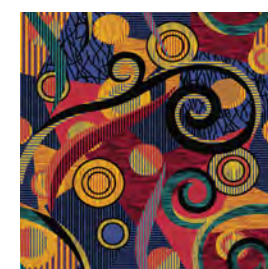
79



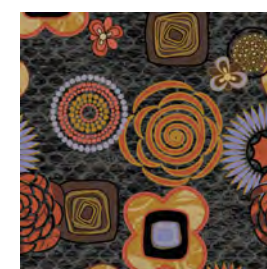
81



83



85



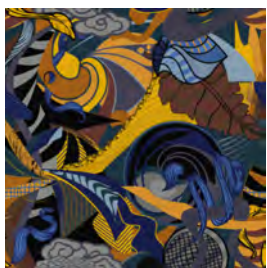
87



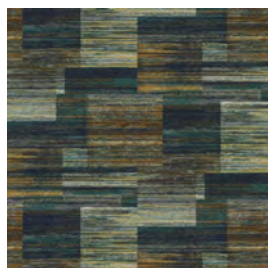
89



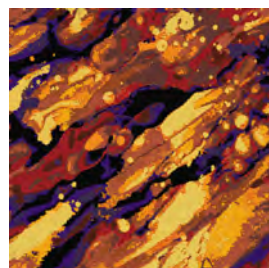
# PATTERNS: QUICK REFERENCE



91



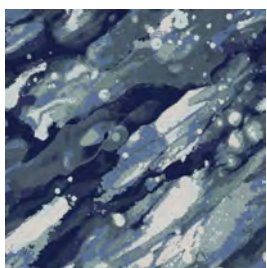
93



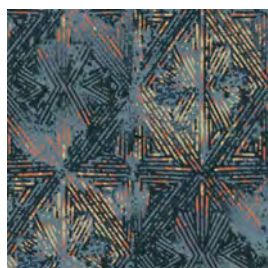
95



97



99



101



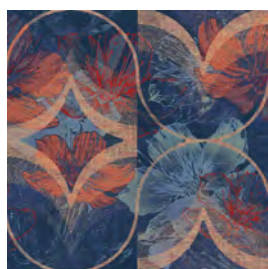
103



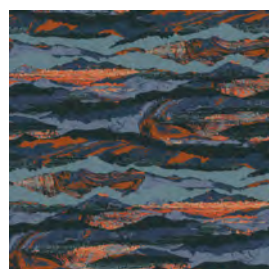
105



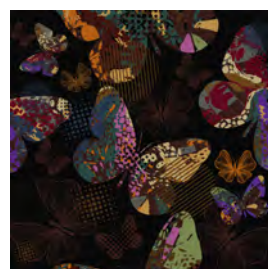
107



109



111



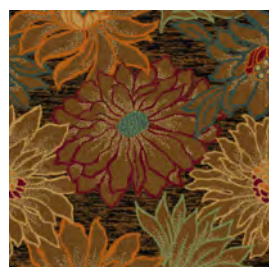
113



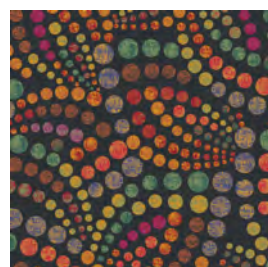
115



117



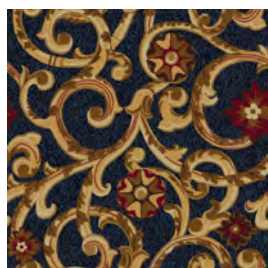
119



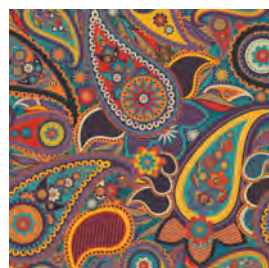
121



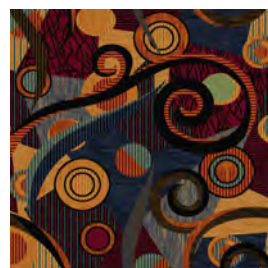
123



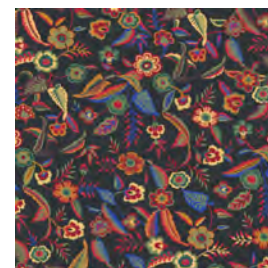
125



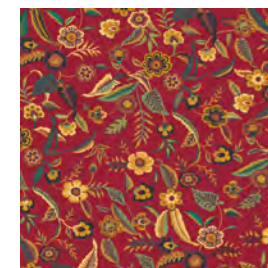
127



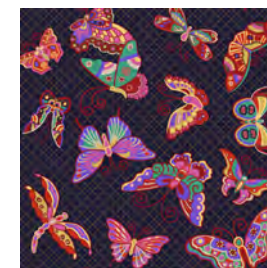
129



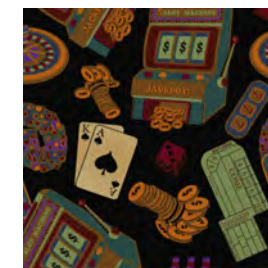
131



133



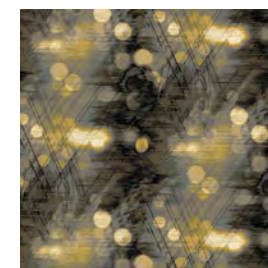
135



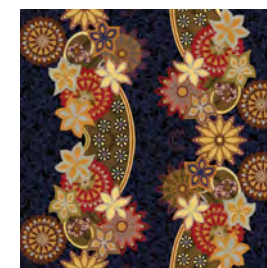
137



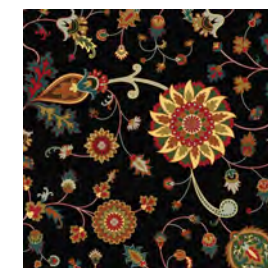
139



141



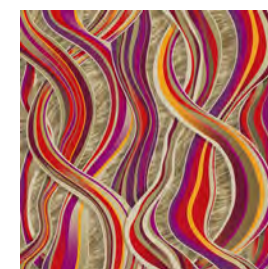
143



145



147



149





Style: AC1113-200  
Repeat: 73.16x73.16  
Color: Custom

Order# 50316 | Injection Dyed

YARN COLORS

- |   |         |   |             |
|---|---------|---|-------------|
| A | Black   | E | RED CLAY    |
| B | BEET    | F | DANDELION   |
| C | ACAJOU  | G | PINK        |
| D | CRIMSOM | H | MOCHA CREAM |

4889 DENARO DRIVE LAS VEGAS, NEVADA 89135 WWW.PRIDECARPETS.COM 1 702-776-8616

Colors are approximate refer to actual sample. All image and content rights are reserved.







Style: 1029A200 Carnival  
Repeat: 36.56x36.56  
Color: Custom

Order# 75572 | Injection Dyed

YARN COLORS

|   |       |   |         |   |             |
|---|-------|---|---------|---|-------------|
| A | Black | E | P33     | I | P27         |
| B | 5F1   | F | N28     | J | H10         |
| C | I45   | G | CRIMSOM | K | 5F1         |
| D | I1    | H | 3K3     | L | MOCHA CREAM |

4889 DENARO DRIVE LAS VEGAS, NEVADA 89135 WWW.PRIDECARPETS.COM 1 702-776-8616

Colors are approximate refer to actual sample. All image and content rights are reserved.







Style: TV-141-200 The Strip  
Repeat: 73.2x73.2  
Color: Custom

Order# 45720 | Injection Dyed

YARN COLORS

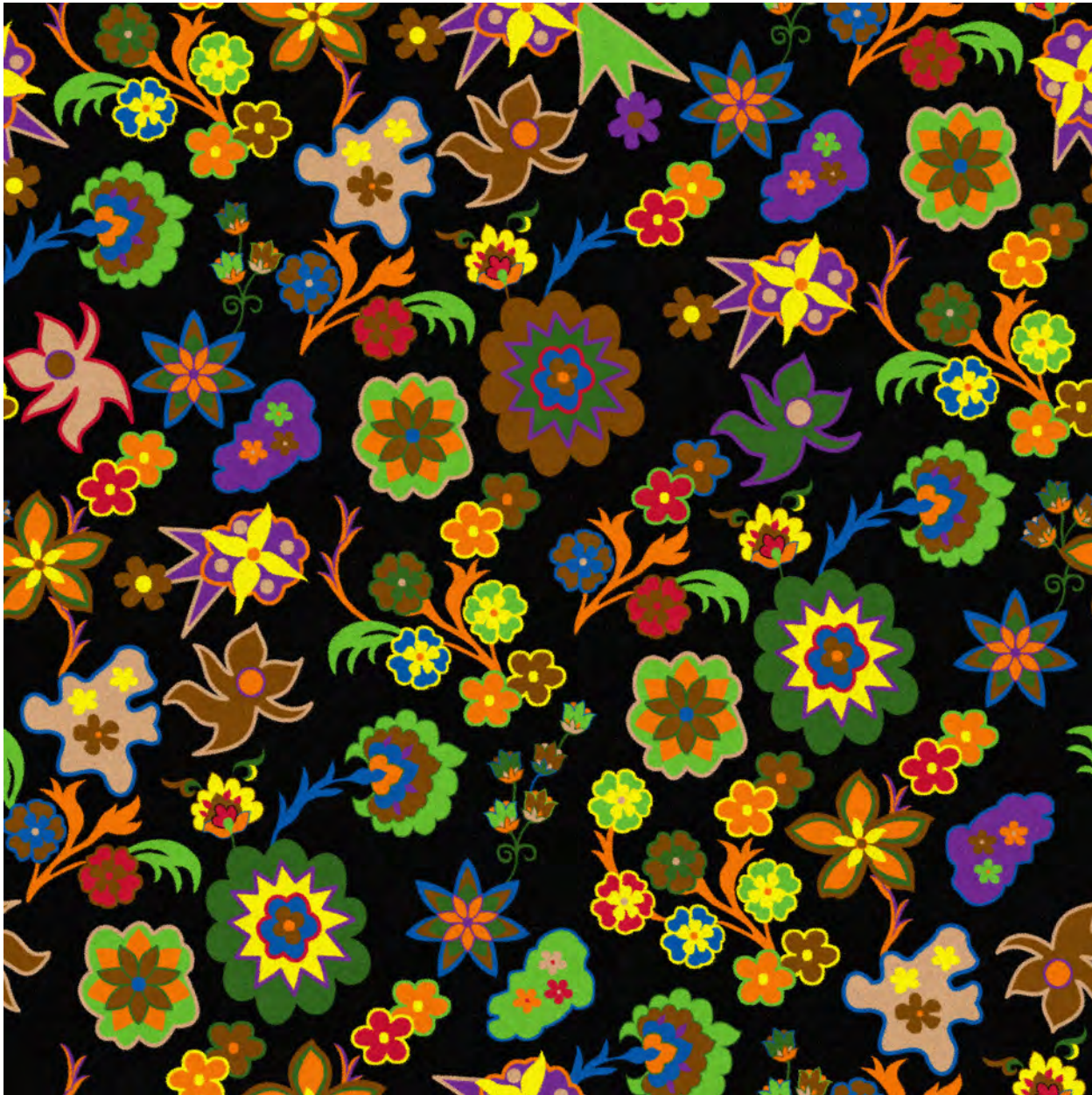
- |   |           |   |           |   |            |
|---|-----------|---|-----------|---|------------|
| A | Black     | E | CHINA SEA | I | GALVANIZED |
| B | GARNET    | F | CRIMSOM   |   |            |
| C | ACAJOU    | G | RED CLAY  |   |            |
| D | BLUE FURY | H | DANDELION |   |            |

4889 DENARO DRIVE LAS VEGAS, NEVADA 89135 WWW.PRIDECARPETS.COM 1 702-776-8616

Colors are approximate refer to actual sample. All image and content rights are reserved.







Style: TV-176-300 Moulin Rouge  
Repeat: 146.32x146.32  
Color: Custom

Order# 50640 | Injection Dyed

YARN COLORS

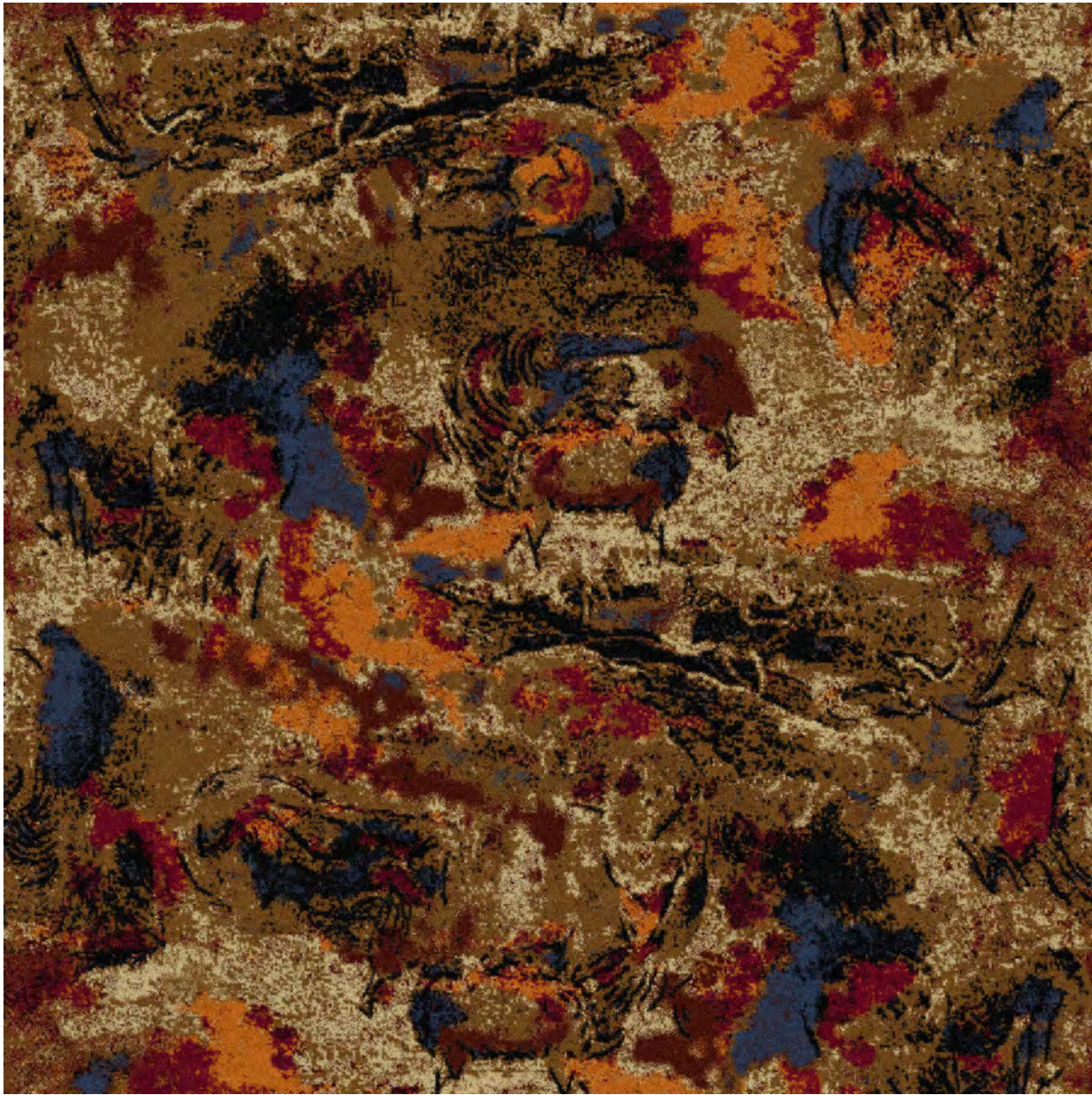
|   |            |   |             |   |             |
|---|------------|---|-------------|---|-------------|
| A | BLACK      | E | PUMPKIN     | I | ROYAL GRAPE |
| B | BELLPEPPER | F | GRASSHOPPER | J | INDIGO      |
| C | DIRT       | G | SUNGLOW     |   |             |
| D | SCARLET    | H | TAN         |   |             |

4889 DENARO DRIVE LAS VEGAS, NEVADA 89135 WWW.PRIDECARPETS.COM 1 702-776-8616

Colors are approximate refer to actual sample. All image and content rights are reserved.







Style: TV-506-200-V4  
Repeat: 73.16x73.16  
Color: Custom

Order# 45362 | Injection Dyed

YARN COLORS

- |   |           |   |             |
|---|-----------|---|-------------|
| A | Black     | E | ACORN       |
| B | GARNET    | F | RED CLAY    |
| C | BLUE FURY | G | MOCHA CREAM |
| D | CRIMSOM   |   |             |

4889 DENARO DRIVE LAS VEGAS, NEVADA 89135 WWW.PRIDECARPETS.COM 1 702-776-8616

Colors are approximate refer to actual sample. All image and content rights are reserved.







Style: AC1113-201  
Repeat: 72x72  
Color: Custom

Order# 80848 | Injection Dyed

YARN COLORS

|   |       |   |          |   |           |
|---|-------|---|----------|---|-----------|
| A | Black | E | K43      | I | H11       |
| B | N45   | F | H43      | J | DANDELION |
| C | 3K3   | G | E22      | K | P1        |
| D | L14   | H | RED CLAY |   |           |

LAS VEGAS, NEVADA WWW.PRIDECARPETS.COM

Colors are approximate refer to actual sample. All image and content rights are reserved.







Style: Eliana 002  
Pattern: 144 x 408 **REPEAT**  
Color: Default

YARN COLORS

|   |   |   |   |   |   |   |   |
|---|---|---|---|---|---|---|---|
| A |  h19 | E |  k54 | I |  j47 | M |  a61 |
| B |  g41 | F |  g33 | J |  h7  |   |   |
| C |  j51 | G |  b20 | K |  a26 |   |   |
| D |  i55 | H |  g32 | L |  a25 |   |   |







Style: 2035K201 Mystique  
Repeat: 36.6x36.6  
Color: Custom

Order# 45326 | Injection Dyed

YARN COLORS

- |   |           |   |           |
|---|-----------|---|-----------|
| A | Black     | E | CRIMSOM   |
| B | ACORN     | F | RED CLAY  |
| C | BLUE FURY | G | SAGUARO   |
| D | VALOR     | H | DANDELION |

4889 DENARO DRIVE LAS VEGAS, NEVADA 89135 WWW.PRIDECARPETS.COM 1 702-776-8616

Colors are approximate refer to actual sample. All image and content rights are reserved.







Style: Des3-202  
Repeat: 73.16x73.16  
Color: Custom

Order# 45342 | Injection Dyed

- YARN COLORS
- |   |             |   |           |
|---|-------------|---|-----------|
| A | MEDIUM GRAY | E | RED CLAY  |
| B | BLUE FURY   | F | DANDELION |
| C | CHINA SEA   |   |           |
| D | CRIMSOM     |   |           |

4889 DENARO DRIVE LAS VEGAS, NEVADA 89135 WWW.PRIDECARPETS.COM 1 702-776-8616

Colors are approximate refer to actual sample. All image and content rights are reserved.







Style: TV-240501  
Repeat: 72x72  
Color: Custom

YARN COLORS

|   |       |   |     |   |     |   |     |
|---|-------|---|-----|---|-----|---|-----|
| A | Black | E | k3  | I | f21 | M | f40 |
| B | g43   | F | b19 | J | g41 | N | l47 |
| C | d42   | G | h10 | K | f41 |   |     |
| D | h7    | H | h18 | L | j40 |   |     |

Colors are approximate refer to actual sample. All image and content rights are reserved.

















Style: TV-507-240617  
Pattern: 72 x 72 REPEAT  
Color: Default

YARN COLORS

|   |   |     |   |   |     |   |   |     |
|---|---|-----|---|---|-----|---|---|-----|
| A |  | h57 | E |  | h19 | I |  | a25 |
| B |  | g45 | F |  | g41 | J |  | a61 |
| C |  | k40 | G |  | g33 |   |   |     |
| D |  | h7  | H |  | b20 |   |   |     |

Colors are approximate refer to actual sample. All image and content rights are reserved.







Style: TV-129-240508 Money Plays  
Repeat: 72x72  
Color:

YARN COLORS

|   |       |   |     |   |     |
|---|-------|---|-----|---|-----|
| A | Black | E | b20 | I | k40 |
| B | g45   | F | h19 | J | a25 |
| C | h57   | G | g33 |   |     |
| D | h7    | H | g41 |   |     |

Colors are approximate refer to actual sample. All image and content rights are reserved.







Style: TV-110-700 The Orleans  
Repeat: 73.2x73.2  
Color: Custom

Order# 80121 | Injection Dyed

YARN COLORS

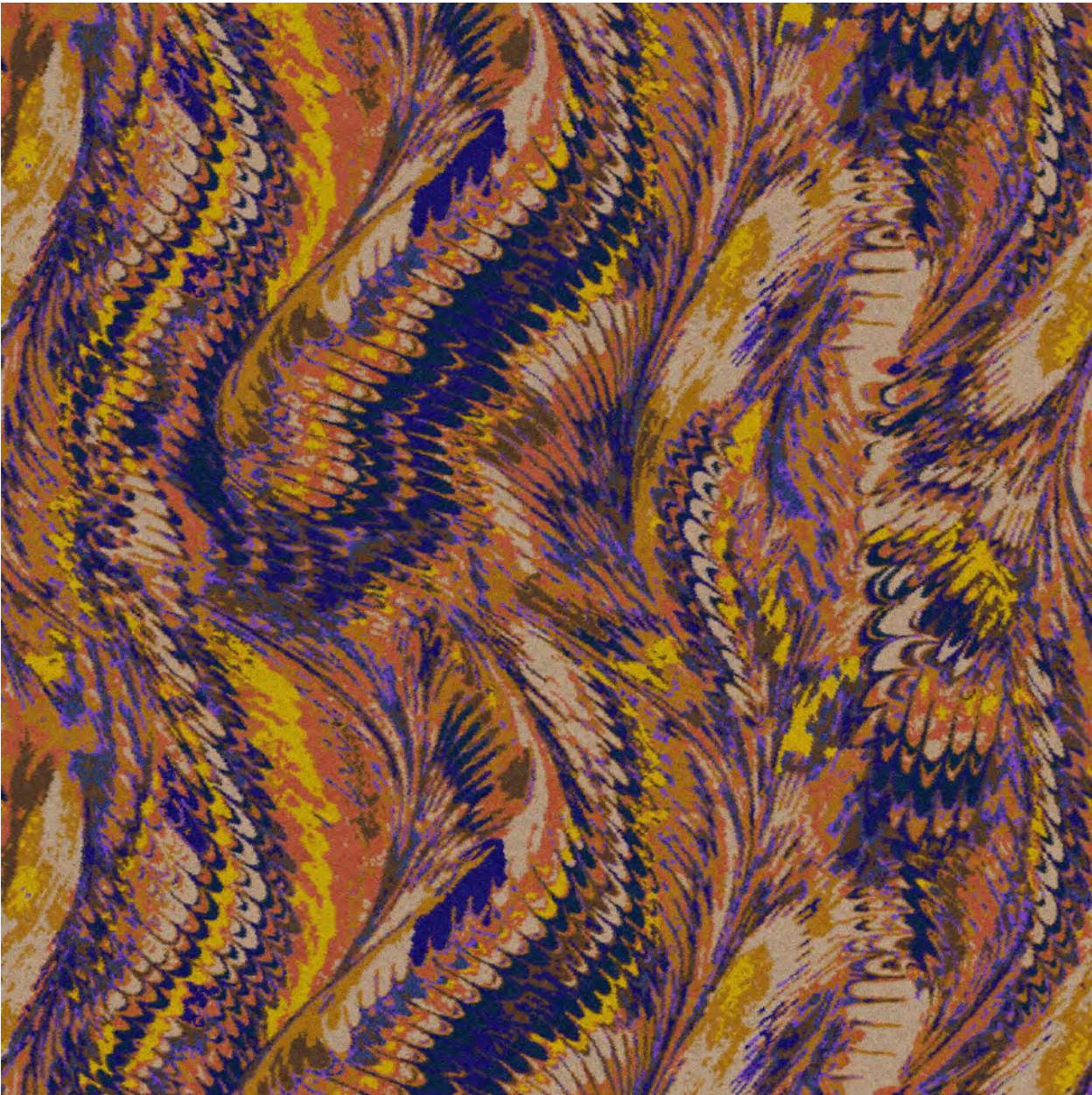
|   |   |     |   |   |     |   |   |     |
|---|---|-----|---|---|-----|---|---|-----|
| A | ■ | O48 | E | ■ | E28 | I | ■ | H11 |
| B | ■ | 5F1 | F | ■ | I45 | J | ■ | P33 |
| C | ■ | H43 | G | ■ | I15 |   |   |     |
| D | ■ | O29 | H | ■ | N10 |   |   |     |

LAS VEGAS, NEVADA    WWW.PRIDECARPETS.COM

Colors are approximate refer to actual sample. All image and content rights are reserved.







Style: TV-240628-1 Hide Everything  
Repeat: 72x48  
Color:

YARN COLORS

- |   |   |   |   |   |   |
|---|---|---|---|---|---|
| A |  g43 | E |  k23 | I |  a58 |
| B |  b54 | F |  j7  |   |   |
| C |  i45 | G |  h18 |   |   |
| D |  h41 | H |  b4  |   |   |

LAS VEGAS, NEVADA WWW.PRIDECARPETS.COM

Colors are approximate refer to actual sample. All image and content rights are reserved.







Style: TV-240627-2  
Repeat: 144x108  
Color:

YARN COLORS

|   |       |   |     |   |     |   |     |
|---|-------|---|-----|---|-----|---|-----|
| A | Black | E | i6  | I | i4  | M | c52 |
| B | l53   | F | e52 | J | f52 | N | e59 |
| C | k6    | G | h4  | K | i10 | O | i13 |
| D | h6    | H | h8  | L | e51 |   |     |

LAS VEGAS, NEVADA WWW.PRIDECARPETS.COM

Colors are approximate refer to actual sample. All image and content rights are reserved.







Style: TV-240806  
Repeat: 144x144  
Color:

YARN COLORS

|   |       |   |     |   |     |   |     |
|---|-------|---|-----|---|-----|---|-----|
| A | BLACK | E | k42 | I | d19 | M | g38 |
| B | g43   | F | h41 | J | f21 | N | f39 |
| C | i45   | G | k45 | K | g41 |   |     |
| D | g44   | H | d27 | L | l39 |   |     |

LAS VEGAS, NEVADA WWW.PRIDECARPETS.COM

Colors are approximate refer to actual sample. All image and content rights are reserved.





















Style: TV-229277  
Repeat: 144.02x144.02  
Color: Custom

Order# 79745 | Injection Dyed

YARN COLORS

|   |   |     |   |   |     |   |   |     |   |   |    |
|---|---|-----|---|---|-----|---|---|-----|---|---|----|
| A |  | k43 | E |  | l15 | I |  | B27 | M |  | O2 |
| B |  | l45 | F |  | N10 | J |  | K43 | N |  | B7 |
| C |  | A45 | G |  | D15 | K |  | 5F1 |   |   |    |
| D |  | h4  | H |  | D34 | L |  | D8  |   |   |    |

LAS VEGAS, NEVADA WWW.PRIDECARPETS.COM

Colors are approximate refer to actual sample. All image and content rights are reserved.
















Style: TV-103-240618  
Pattern: 72 x 72 **REPEAT**  
Color: Default

YARN COLORS

|   |   |     |   |   |     |   |   |     |
|---|---|-----|---|---|-----|---|---|-----|
| A |  | h41 | E |  | k3  | I |  | a61 |
| B |  | h47 | F |  | k26 |   |   |     |
| C |  | g41 | G |  | e23 |   |   |     |
| D |  | i44 | H |  | a21 |   |   |     |







Style: TV-240806  
Repeat: 144x144  
Color: Custom

Order# 80413 | Injection Dyed

YARN COLORS

|   |       |   |     |   |     |   |     |
|---|-------|---|-----|---|-----|---|-----|
| A | BLACK | E | k42 | I | d19 | M | g38 |
| B | g43   | F | h41 | J | f21 | N | f39 |
| C | i45   | G | k45 | K | B27 |   |     |
| D | g44   | H | d27 | L | l39 |   |     |

LAS VEGAS, NEVADA    WWW.PRIDECARPETS.COM

Colors are approximate refer to actual sample. All image and content rights are reserved.







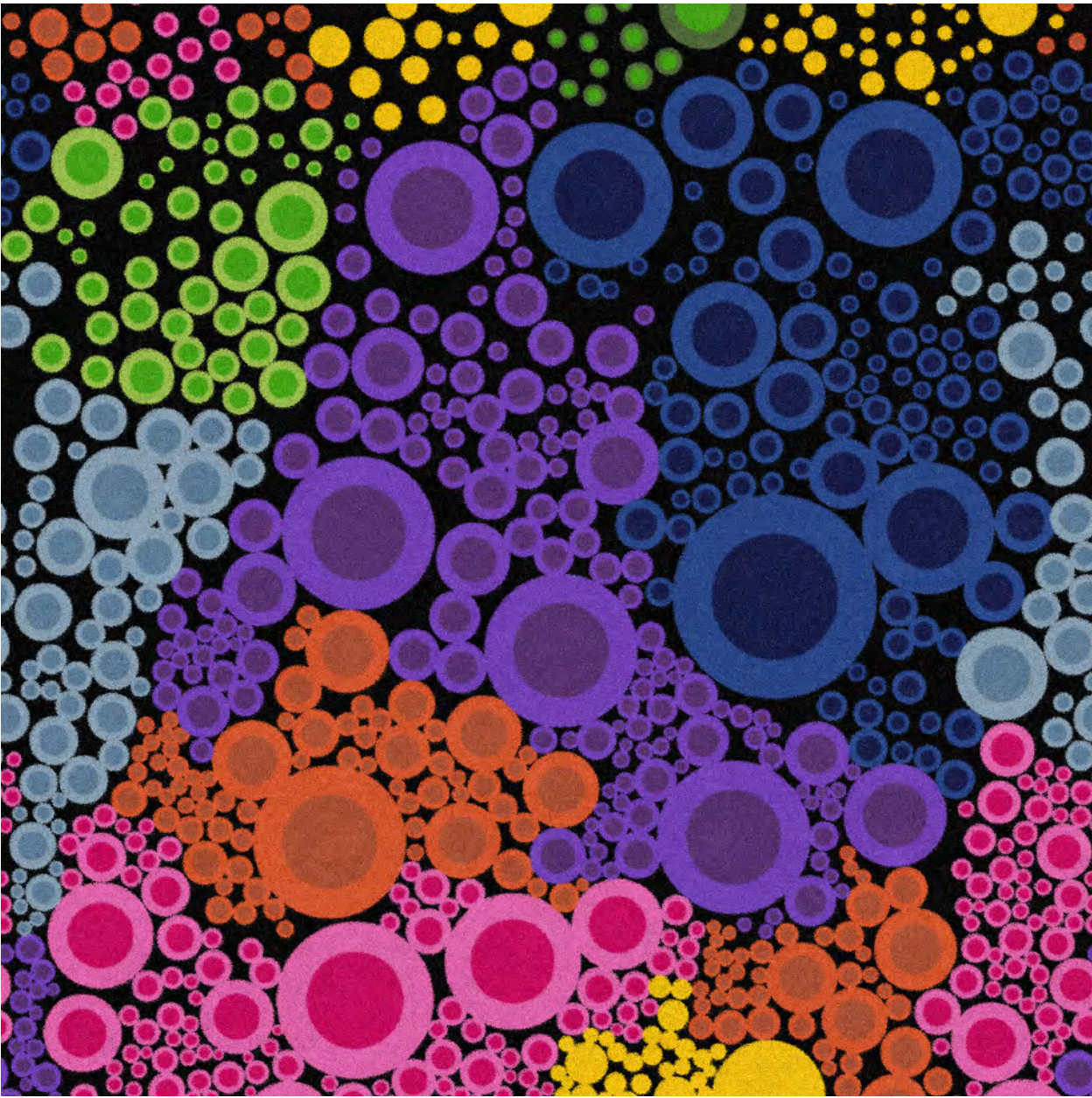
Style: TV-240806-1  
Repeat: 144x144  
Color:

YARN COLORS

|   |       |   |     |   |     |   |     |
|---|-------|---|-----|---|-----|---|-----|
| A | Black | E | a7  | I | f21 | M | k49 |
| B | i45   | F | b9  | J | b4  |   |     |
| C | b6    | G | b20 | K | c3  |   |     |
| D | i41   | H | f20 | L | j38 |   |     |







Style: TV-240812  
Repeat: 72x133.2  
Color:

YARN COLORS

|   |       |   |     |   |     |   |     |
|---|-------|---|-----|---|-----|---|-----|
| A | BLACK | E | j7  | I | f21 | M | b4  |
| B | i29   | F | j9  | J | g33 | N | f10 |
| C | i44   | G | h10 | K | g41 | O | h47 |
| D | a7    | H | i27 | L | g47 |   |     |







Style: TV-240731  
Repeat: 144x168.2  
Color:

YARN COLORS

|   |       |   |     |   |     |
|---|-------|---|-----|---|-----|
| A | Black | E | g44 | I | h19 |
| B | f45   | F | h7  | J | j57 |
| C | k6    | G | h4  | K | a25 |
| D | h6    | H | j9  |   |     |







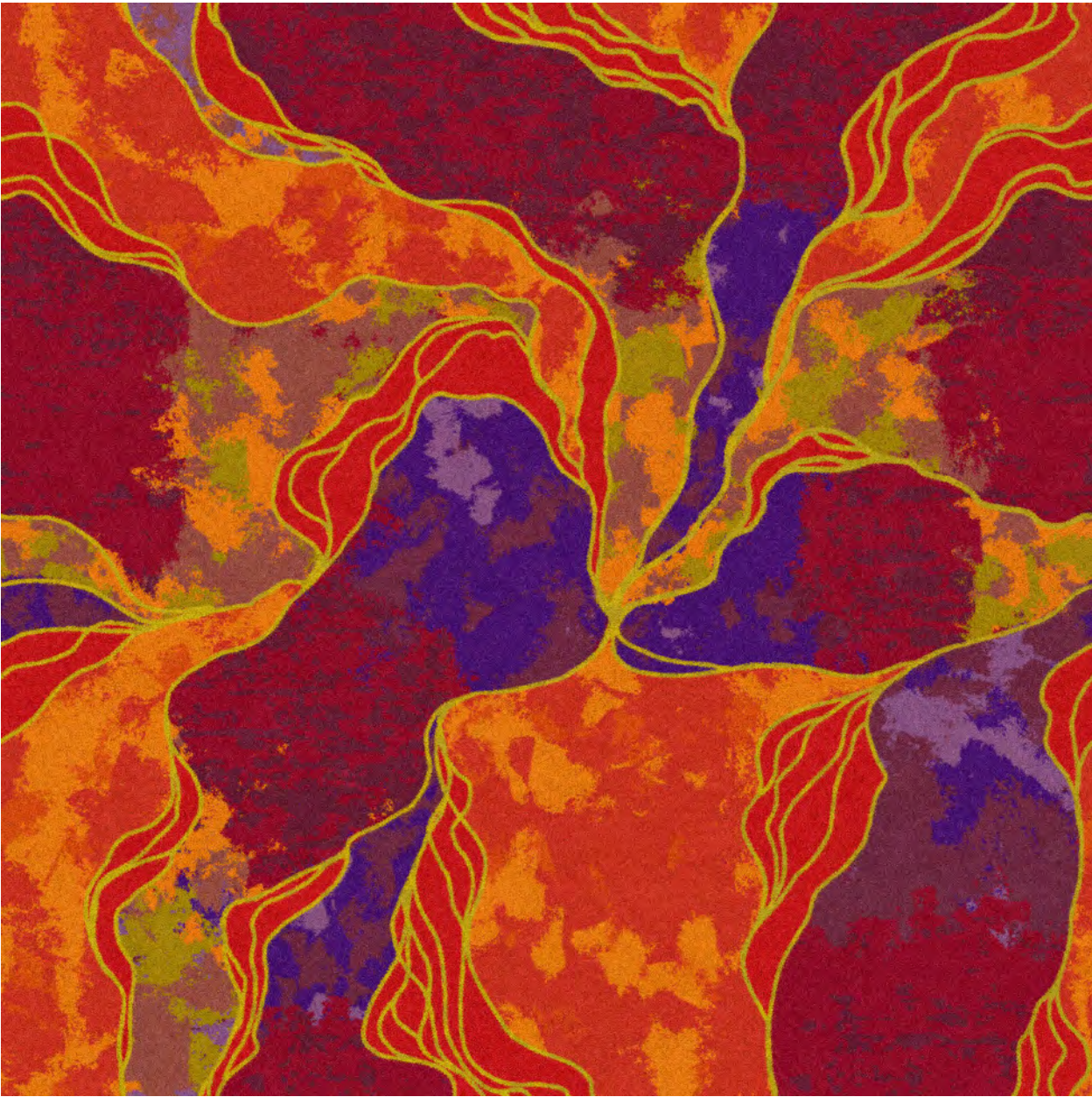
Style: TV-240903-1  
Repeat: 144x162  
Color:

YARN COLORS

|   |       |   |     |   |     |   |     |
|---|-------|---|-----|---|-----|---|-----|
| A | Black | E | hg  | I | j52 | M | e39 |
| B | l53   | F | a20 | J | e16 | N | c47 |
| C | k6    | G | g20 | K | g22 |   |     |
| D | k53   | H | b21 | L | f22 |   |     |







Style: TV-240429  
Repeat: 72x72  
Color:

YARN COLORS

|   |    |   |     |   |     |   |    |
|---|----|---|-----|---|-----|---|----|
| A | g5 | E | k3  | I | a19 | M | c3 |
| B | d6 | F | k8  | J | g20 |   |    |
| C | a8 | G | j8  | K | f16 |   |    |
| D | h7 | H | b20 | L | c33 |   |    |

LAS VEGAS, NEVADA WWW.PRIDECARPETS.COM

Colors are approximate refer to actual sample. All image and content rights are reserved.







Style: TV-240909  
Repeat: 144x242.8  
Color:

## YARN COLORS

|   |       |   |     |   |     |   |     |
|---|-------|---|-----|---|-----|---|-----|
| A | Black | E | i45 | I | j7  | M | k39 |
| B | b54   | F | l42 | J | d16 | N | b2  |
| C | l6    | G | a56 | K | k9  | O | l13 |
| D | k5    | H | a52 | L | d14 |   |     |







Style: TV-240826  
Repeat: 144x299.4  
Color: Custom

Order# 80682 | Injection Dyed

YARN COLORS

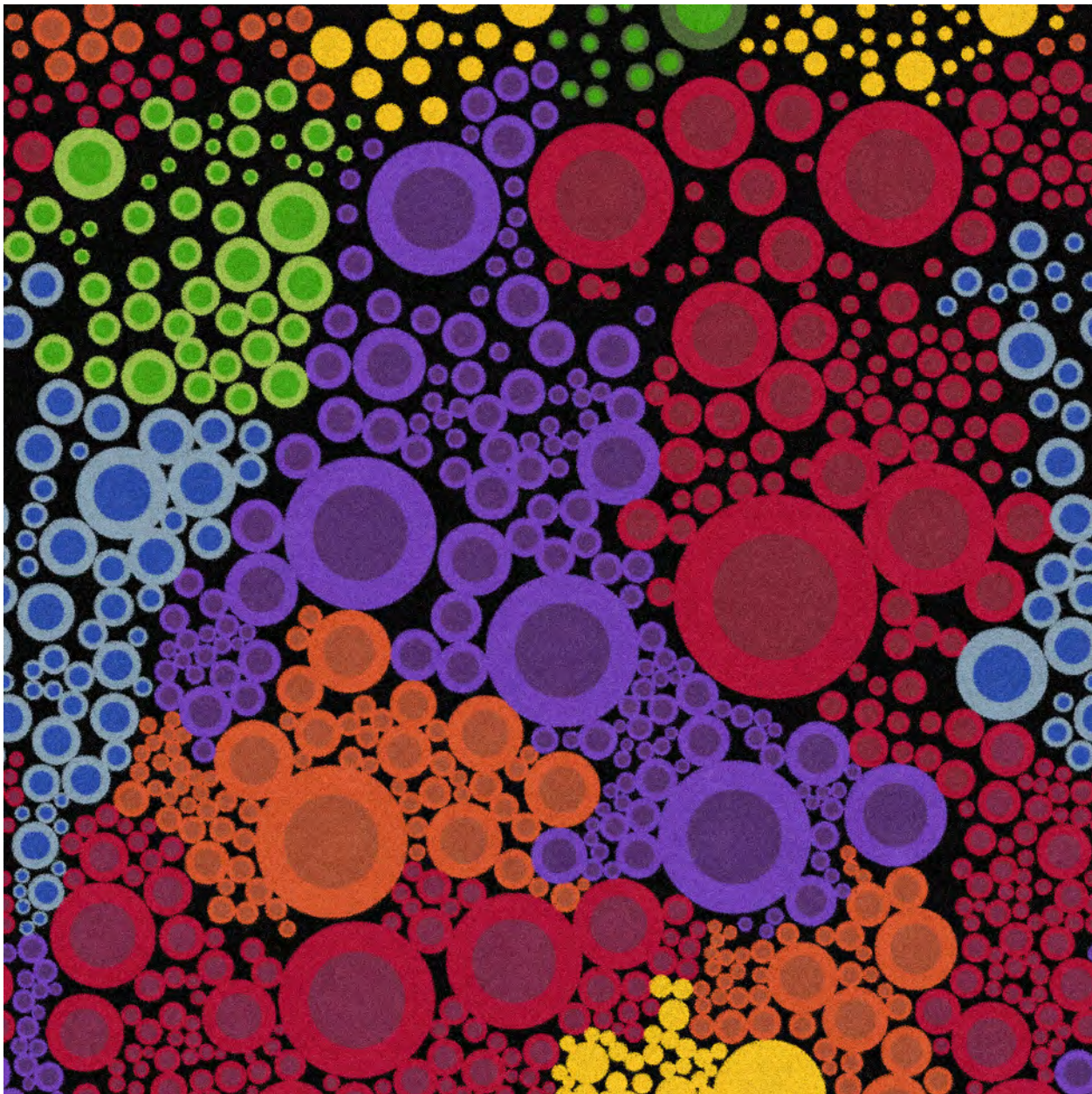
|   |       |   |     |   |     |   |     |
|---|-------|---|-----|---|-----|---|-----|
| A | Black | E | e42 | I | h19 | M | e39 |
| B | g5    | F | l45 | J | B27 | N | l15 |
| C | k6    | G | h4  | K | e44 |   |     |
| D | P33   | H | b19 | L | K38 |   |     |

LAS VEGAS, NEVADA WWW.PRIDECARPETS.COM

Colors are approximate refer to actual sample. All image and content rights are reserved.







Style: TV-240812  
Repeat: 72x133.2  
Color: Custom

Order# 80650 | Injection Dyed

YARN COLORS

|   |       |   |     |   |     |   |     |
|---|-------|---|-----|---|-----|---|-----|
| A | BLACK | E | j7  | I | H11 | M | b4  |
| B | i29   | F | j9  | J | g33 | N | l45 |
| C | l42   | G | J41 | K | l45 | O | h47 |
| D | a7    | H | i27 | L | P33 |   |     |

LAS VEGAS, NEVADA WWW.PRIDECARPETS.COM

Colors are approximate refer to actual sample. All image and content rights are reserved.







Style: TV-240826  
Repeat: 144x299.4  
Color: Custom

Order# 80449 | Injection Dyed

YARN COLORS

|   |       |   |     |   |     |   |     |
|---|-------|---|-----|---|-----|---|-----|
| A | Black | E | e42 | I | h19 | M | e39 |
| B | g5    | F | k4  | J | g41 | N | c46 |
| C | k6    | G | h4  | K | e44 |   |     |
| D | i44   | H | b19 | L | f40 |   |     |

LAS VEGAS, NEVADA WWW.PRIDECARPETS.COM

Colors are approximate refer to actual sample. All image and content rights are reserved.







Style: TV-240805  
Repeat: 144x287.92  
Color: Custom

Order# 80634 | Injection Dyed

YARN COLORS

|   |       |   |     |   |     |   |    |
|---|-------|---|-----|---|-----|---|----|
| A | Black | E | i10 | I | l45 | M | D8 |
| B | j9    | F | H11 | J | f10 |   |    |
| C | l48   | G | h40 | K | b39 |   |    |
| D | l48   | H | k46 | L | h39 |   |    |

LAS VEGAS, NEVADA WWW.PRIDECARPETS.COM

Colors are approximate refer to actual sample. All image and content rights are reserved.







Style: TV-240903-2  
Repeat: 144x162  
Color: Custom

Order# 80674 | Injection Dyed

YARN COLORS

|   |       |   |     |   |     |   |     |
|---|-------|---|-----|---|-----|---|-----|
| A | Black | E | D34 | I | J40 | M | c40 |
| B | h55   | F | l15 | J | d19 |   |     |
| C | B43   | G | l43 | K | f19 |   |     |
| D | h56   | H | D8  | L | H11 |   |     |

LAS VEGAS, NEVADA    WWW.PRIDECARPETS.COM

Colors are approximate refer to actual sample. All image and content rights are reserved.







Style: TV-240726  
Repeat: 72x54  
Color: Custom

Order# 80407 | Injection Dyed

YARN COLORS

|   |       |   |     |   |     |   |     |
|---|-------|---|-----|---|-----|---|-----|
| A | Black | E | b19 | I | g20 | M | f22 |
| B | g45   | F | b20 | J | h19 | N | e44 |
| C | g5    | G | g4  | K | e22 |   |     |
| D | h7    | H | h10 | L | i23 |   |     |

LAS VEGAS, NEVADA WWW.PRIDECARPETS.COM

Colors are approximate refer to actual sample. All image and content rights are reserved.







Style: TV-240909  
Repeat: 144x242.8  
Color: Custom

Order# 80725 | Injection Dyed

#### YARN COLORS

|   |       |   |     |   |     |   |     |
|---|-------|---|-----|---|-----|---|-----|
| A | Black | E | N10 | I | I45 | M | G17 |
| B | N15   | F | 5G2 | J | A41 | N | M3  |
| C | I13   | G | 3K3 | K | I43 | O | D6  |
| D | H43   | H | H11 | L | D8  |   |     |

LAS VEGAS, NEVADA WWW.PRIDECARPETS.COM

Colors are approximate refer to actual sample. All image and content rights are reserved.







Style: TV-240904

Repeat: 144x242.8

Color:

#### YARN COLORS

|   |       |   |     |   |     |
|---|-------|---|-----|---|-----|
| A | BLACK | E | k5  | I | g21 |
| B | BLACK | F | a56 | J | f21 |
| C | a55   | G | k4  |   |     |
| D | l6    | H | a57 |   |     |







Style: Eliana 004  
Repeat: 144x407.96  
Color: Custom

Order# 80873 | Injection Dyed

YARN COLORS

|   |     |   |     |   |     |
|---|-----|---|-----|---|-----|
| A | I41 | E | N9  | I | H11 |
| B | I43 | F | C15 |   |     |
| C | 5F1 | G | B7  |   |     |
| D | A45 | H | D8  |   |     |

LAS VEGAS, NEVADA    WWW.PRIDECARPETS.COM

Colors are approximate refer to actual sample. All image and content rights are reserved.







Style: Eliana 004  
Repeat: 144x407.96  
Color: Custom

Order# 80859 | Injection Dyed

YARN COLORS

- |   |       |   |          |   |             |
|---|-------|---|----------|---|-------------|
| A | Black | E | A45      | I | MOCHA CREAM |
| B | J33   | F | K7       |   |             |
| C | B16   | G | RED CLAY |   |             |
| D | E24   | H | H11      |   |             |

LAS VEGAS, NEVADA    WWW.PRIDECARPETS.COM

Colors are approximate refer to actual sample. All image and content rights are reserved.







Style: TV-240731  
Repeat: 144x168.2  
Color: Custom

Order# 80818 | Injection Dyed

YARN COLORS

|   |       |   |     |   |     |
|---|-------|---|-----|---|-----|
| A | Black | E | I43 | I | D8  |
| B | H11   | F | H9  | J | O18 |
| C | M39   | G | I45 | K | D11 |
| D | B39   | H | A45 |   |     |

LAS VEGAS, NEVADA    WWW.PRIDECARPETS.COM

Colors are approximate refer to actual sample. All image and content rights are reserved.







Style: TV-240731  
Repeat: 144x168.2  
Color: Custom

Order# 80799 | Injection Dyed

YARN COLORS

|   |       |   |     |   |    |
|---|-------|---|-----|---|----|
| A | Black | E | G17 | I | H9 |
| B | K33   | F | 5F1 | J | M3 |
| C | I43   | G | A45 | K | D3 |
| D | I48   | H | H11 |   |    |

LAS VEGAS, NEVADA WWW.PRIDECARPETS.COM

Colors are approximate refer to actual sample. All image and content rights are reserved.







Style: TV-149-200 Hoover Dam  
Repeat: 73.2x73.2  
Color: Custom

Order# 80774 | Injection Dyed

YARN COLORS

- |   |       |   |     |
|---|-------|---|-----|
| A | Black | E | L38 |
| B | E28   | F | H11 |
| C | N27   | G | M20 |
| D | N42   | H | K25 |

LAS VEGAS, NEVADA    WWW.PRIDECARPETS.COM

Colors are approximate refer to actual sample. All image and content rights are reserved.







Style: TV-240920  
Repeat: 144x242.8  
Color:

## YARN COLORS

|   |       |   |     |   |     |   |     |
|---|-------|---|-----|---|-----|---|-----|
| A | Black | E | i55 | I | d16 | M | b2  |
| B | b54   | F | a52 | J | k9  | N | l13 |
| C | l6    | G | l56 | K | d14 |   |     |
| D | k5    | H | j7  | L | k39 |   |     |







Style: TV-240904  
Repeat: 144x242.8  
Color: Custom

Order# 80963 | Injection Dyed

YARN COLORS

- |   |       |   |     |   |     |
|---|-------|---|-----|---|-----|
| A | BLACK | E | l42 | I | F23 |
| B | 5G2   | F | C18 | J | D8  |
| C | a55   | G | l43 |   |     |
| D | l6    | H | a57 |   |     |

LAS VEGAS, NEVADA    WWW.PRIDECARPETS.COM

Colors are approximate refer to actual sample. All image and content rights are reserved.







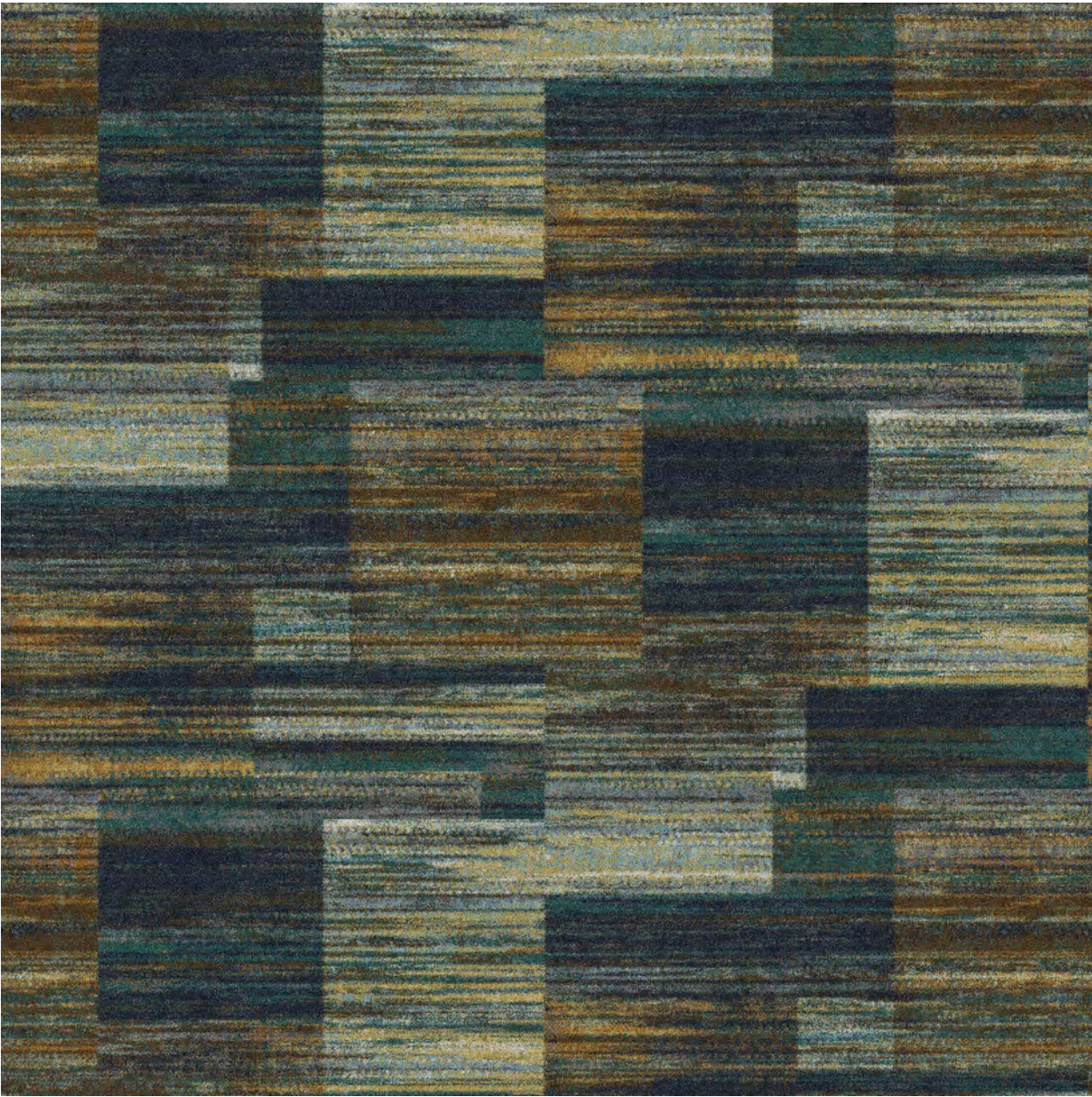
Style: TV-240930  
Repeat: 72x72  
Color:

YARN COLORS

|   |       |   |     |   |     |   |     |
|---|-------|---|-----|---|-----|---|-----|
| A | BLACK | E | k5  | I | b17 | M | l57 |
| B | g45   | F | i44 | J | h19 | N | h47 |
| C | k6    | G | l44 | K | c21 |   |     |
| D | a55   | H | l56 | L | g39 |   |     |







Style: TVKM2133-900  
Repeat: 48.76x36.6  
Color: Custom

Order# 65100 | Injection Dyed

YARN COLORS

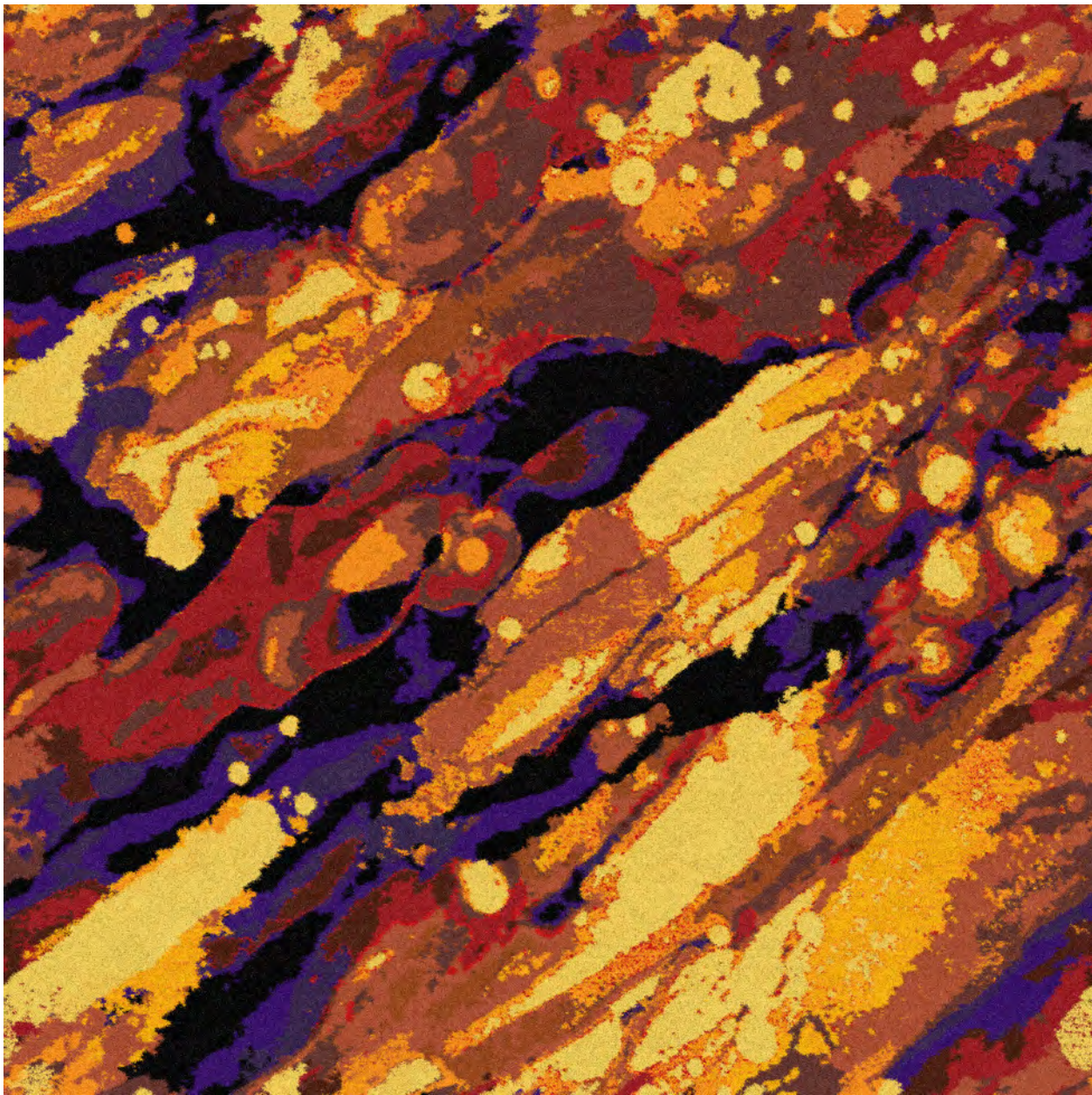
- |   |     |   |     |
|---|-----|---|-----|
| A | h43 | E | k20 |
| B | e55 | F | d58 |
| C | c44 | G | e46 |
| D | k57 | H | g60 |

LAS VEGAS, NEVADA    WWW.PRIDECARPETS.COM

Colors are approximate refer to actual sample. All image and content rights are reserved.







Style: TV-240929-1  
Repeat: 72x72  
Color:

YARN COLORS

|   |       |   |     |   |     |   |     |
|---|-------|---|-----|---|-----|---|-----|
| A | Black | E | k42 | I | j7  | M | h21 |
| B | l7    | F | k4  | J | d19 |   |     |
| C | k5    | G | k3  | K | f20 |   |     |
| D | l42   | H | j5  | L | e23 |   |     |







Style: TV504-200 V1  
Repeat: 73.16x73.16  
Color: Custom

Order# 43845 | Injection Dyed

YARN COLORS

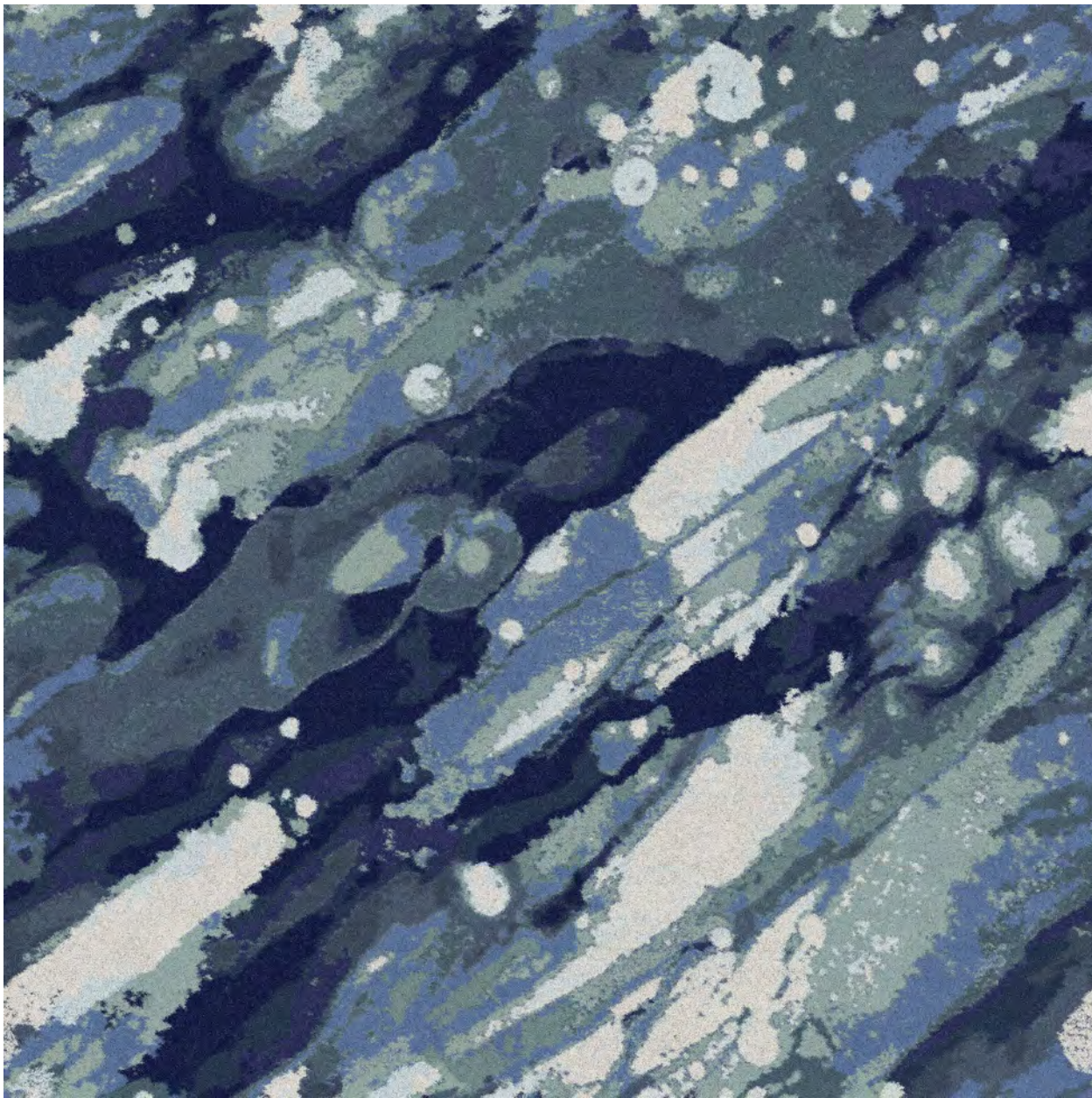
- |   |            |   |           |   |             |
|---|------------|---|-----------|---|-------------|
| A | Black      | E | CRIMSOM   | I | MOCHA CREAM |
| B | GARNET     | F | ACORN     |   |             |
| C | BLUE FURY  | G | RED CLAY  |   |             |
| D | GALVANIZED | H | DANDELION |   |             |

LAS VEGAS, NEVADA    WWW.PRIDECARPETS.COM

Colors are approximate refer to actual sample. All image and content rights are reserved.







Style: TV-240929  
Repeat: 72x72  
Color:

YARN COLORS

|   |   |     |   |   |     |   |   |     |   |   |     |
|---|---|-----|---|---|-----|---|---|-----|---|---|-----|
| A | ■ | i43 | E | ■ | j45 | I | ■ | d38 | M | ■ | k49 |
| B | ■ | g44 | F | ■ | f46 | J | ■ | d37 |   |   |     |
| C | ■ | i41 | G | ■ | j47 | K | ■ | e38 |   |   |     |
| D | ■ | j44 | H | ■ | i39 | L | ■ | h37 |   |   |     |







Style: TV-831  
Repeat: 36x44  
Color: Custom

Order# 66311 | Injection Dyed

YARN COLORS

- |   |   |     |   |   |     |
|---|---|-----|---|---|-----|
| A |  | c43 | E |  | f47 |
| B |  | e43 | F |  | c50 |
| C |  | j3  |   |   |     |
| D |  | i39 |   |   |     |

LAS VEGAS, NEVADA    [WWW.PRIDECARPETS.COM](http://WWW.PRIDECARPETS.COM)

Colors are approximate refer to actual sample. All image and content rights are reserved.







































Style: TV-22511-10  
Pattern: 144in x 144in repeat  
Color: Default

YARN COLORS

|   |   |   |   |   |   |   |   |
|---|---|---|---|---|---|---|---|
|  A61 |  H6  |  C4  |  I5  |  K21 |  J52 |  C22 |  E22 |
|  H4  |  I54 |  K3  |  I56 |  E45 |  E40 |  I14 |  I58 |
|  C5  |  G8  |  K53 |  E44 |  J16 |  I52 |  J57 |  H19 |
|  H7  |  K54 |  I57 |  A52 |  F40 |  C51 |  G57 |  F19 |

WWW.CASINOCARPETS.COM

Colors are approximate. Due to variation in monitors, printers and light sources, we cannot guarantee that the colors in these images will be an exact color match. Please refer to actual sample.







Style: TV-700  
Repeat: 146.32x121.92  
Color: Custom

Order# 66323 | Injection Dyed

YARN COLORS

- |   |   |     |   |   |     |   |   |    |
|---|---|-----|---|---|-----|---|---|----|
| A |  | k43 | E |  | a41 | I |  | g9 |
| B |  | k4  | F |  | e17 |   |   |    |
| C |  | k8  | G |  | g22 |   |   |    |
| D |  | i9  | H |  | k40 |   |   |    |

LAS VEGAS, NEVADA WWW.PRIDECARPETS.COM

Colors are approximate refer to actual sample. All image and content rights are reserved.







Style: TV-864  
Repeat: 146.32x121.92  
Color: Custom

Order# 66335 | Injection Dyed

YARN COLORS

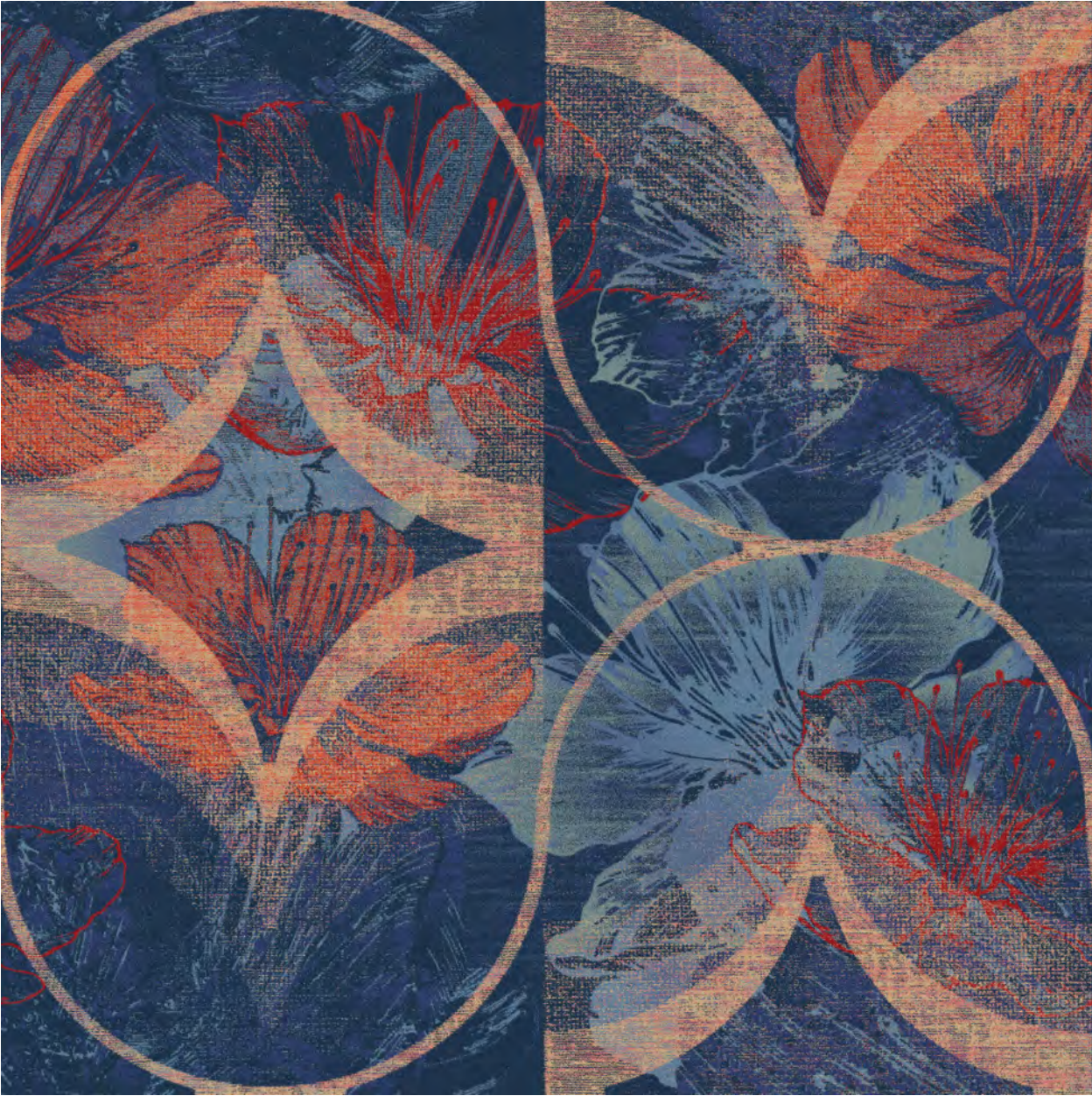
- |   |     |   |     |
|---|-----|---|-----|
| A | e43 | E | b41 |
| B | d42 | F | b22 |
| C | b20 | G | d22 |
| D | j9  | H | f40 |

LAS VEGAS, NEVADA    WWW.PRIDECARPETS.COM

Colors are approximate refer to actual sample. All image and content rights are reserved.







Style: TV-812  
Repeat: 144x144  
Color: Custom

Order# 64343 | Injection Dyed

YARN COLORS

- |   |     |   |     |   |     |
|---|-----|---|-----|---|-----|
| A | e42 | E | j9  | I | d38 |
| B | h41 | F | i10 | J | d13 |
| C | g46 | G | h46 |   |     |
| D | k4  | H | g47 |   |     |

LAS VEGAS, NEVADA    WWW.PRIDECARPETS.COM

Colors are approximate refer to actual sample. All image and content rights are reserved.









Style: TV-830  
Repeat: 36x36  
Color: Custom

Order# 66309 | Injection Dyed

YARN COLORS

- |   |   |     |   |   |     |
|---|---|-----|---|---|-----|
| A |  | c43 | E |  | j9  |
| B |  | e43 | F |  | i39 |
| C |  | i40 | G |  | f47 |
| D |  | j5  | H |  | c50 |

LAS VEGAS, NEVADA    [WWW.PRIDECARPETS.COM](http://WWW.PRIDECARPETS.COM)

Colors are approximate refer to actual sample. All image and content rights are reserved.







Style: 5035B200 Painted Butterfly 1  
Repeat: 73.16x73.16  
Color: Custom

Order# 43829 | Injection Dyed

YARN COLORS

|   |        |   |           |   |           |   |          |
|---|--------|---|-----------|---|-----------|---|----------|
| A | Black  | E | BLUE FURY | I | ACORN     | M | PINK     |
| B | GARNET | F | VALOR     | J | RED CLAY  | N | GALVANIZ |
| C | BEET   | G | CHINA SEA | K | SAGUARO   | O | MOCHA CF |
| D | ACAJOU | H | CRIMSOM   | L | DANDELION |   |          |

LAS VEGAS, NEVADA    WWW.PRIDECARPETS.COM

Colors are approximate refer to actual sample. All image and content rights are reserved.
















Style: Eliana 005  
Repeat: 144x407.96  
Color: Custom

Order# 76661 |

YARN COLORS

|   |   |     |   |   |     |   |   |     |
|---|---|-----|---|---|-----|---|---|-----|
| A |  | k43 | E |  | b20 | I |  | a25 |
| B |  | k54 | F |  | h19 |   |   |     |
| C |  | i55 | G |  | g33 |   |   |     |
| D |  | h7  | H |  | g41 |   |   |     |

LAS VEGAS, NEVADA    [WWW.PRIDECARPETS.COM](http://WWW.PRIDECARPETS.COM)

Colors are approximate refer to actual sample. All image and content rights are reserved.







Style: TV-711-201 Gold Strike-E  
Repeat: 73.2x73.2  
Color: Custom

Order# 45366 | Injection Dyed

YARN COLORS

- |   |           |   |           |   |             |
|---|-----------|---|-----------|---|-------------|
| A | BEET      | E | ACORN     | I | GALVANIZED  |
| B | ACAJOU    | F | RED CLAY  | J | MOCHA CREAM |
| C | BLUE FURY | G | SAGUARO   |   |             |
| D | CRIMSOM   | H | DANDELION |   |             |

LAS VEGAS, NEVADA WWW.PRIDECARPETS.COM

Colors are approximate refer to actual sample. All image and content rights are reserved.







Style: 1033A200 Les Jardin  
Repeat: 36.6x36.6  
Color: Custom

Order# 43879 | Injection Dyed

YARN COLORS

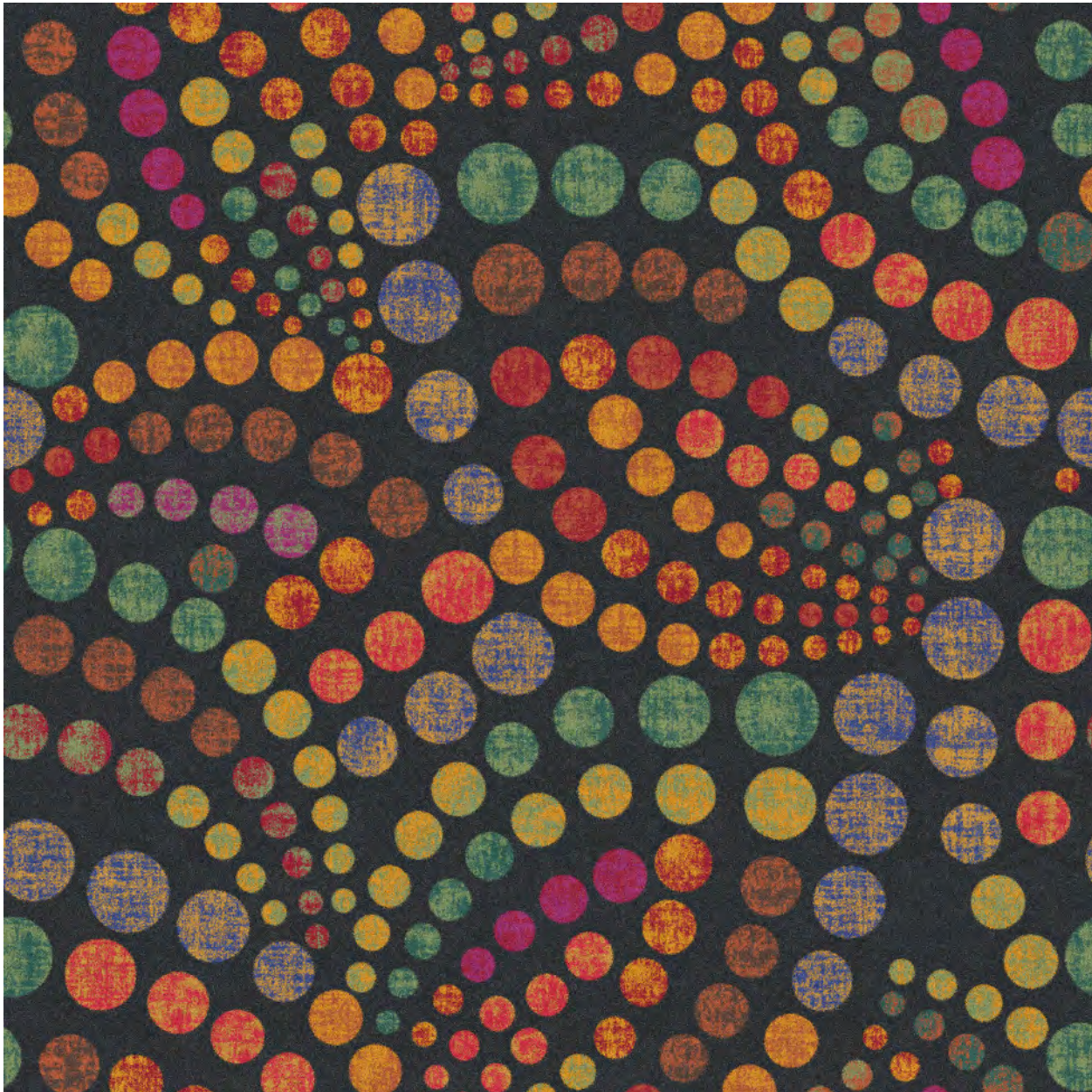
- |   |           |   |           |   |             |
|---|-----------|---|-----------|---|-------------|
| A | Black     | E | ACORN     | I | MOCHA CREAM |
| B | ACORN     | F | RED CLAY  |   |             |
| C | CHINA SEA | G | SAGUARO   |   |             |
| D | CRIMSOM   | H | DANDELION |   |             |

LAS VEGAS, NEVADA    WWW.PRIDECARPETS.COM

Colors are approximate refer to actual sample. All image and content rights are reserved.







Style: TV723-700 Tarkanian  
Repeat: 73.2x73.2  
Color: Custom

Order# 43849 | Injection Dyed

YARN COLORS

|   |   |     |   |   |     |   |   |     |
|---|---|-----|---|---|-----|---|---|-----|
| A |  | P47 | E |  | B27 | I |  | C16 |
| B |  | F44 | F |  | J27 | J |  | L14 |
| C |  | C45 | G |  | N32 | K |  | L38 |
| D |  | H43 | H |  | C18 |   |   |     |

LAS VEGAS, NEVADA WWW.PRIDECARPETS.COM

Colors are approximate refer to actual sample. All image and content rights are reserved.







Style: Bolivia 001  
Repeat: 72x72  
Color: Custom

Order# 67905 | Injection Dyed

YARN COLORS

|   |   |     |   |   |     |   |   |     |
|---|---|-----|---|---|-----|---|---|-----|
| A |  | c43 | E |  | h10 | I |  | f21 |
| B |  | i41 | F |  | a41 | J |  | l40 |
| C |  | e8  | G |  | a21 | K |  | g38 |
| D |  | ig  | H |  | f19 | L |  | i38 |

LAS VEGAS, NEVADA    [WWW.PRIDECARPETS.COM](http://WWW.PRIDECARPETS.COM)

Colors are approximate refer to actual sample. All image and content rights are reserved.







Style: 4040B200 Venetian Scroll  
Repeat: 48.76x48.76  
Color: Custom

Order# 43887 | Injection Dyed

YARN COLORS

- |   |           |   |             |
|---|-----------|---|-------------|
| A | Black     | E | ACORN       |
| B | BEET      | F | DANDELION   |
| C | BLUE FURY | G | MOCHA CREAM |
| D | CRIMSOM   |   |             |

LAS VEGAS, NEVADA WWW.PRIDECARPETS.COM

Colors are approximate refer to actual sample. All image and content rights are reserved.







Style: Paisley 701  
Repeat: 72x72  
Color: Custom

Order# 63577 | Injection Dyed

YARN COLORS

|   |   |   |   |   |   |
|---|---|---|---|---|---|
| A |  P47 | E |  I1  | I |  E27 |
| B |  O47 | F |  E23 | J |  E28 |
| C |  J47 | G |  N36 | K |  D10 |
| D |  L34 | H |  B44 |   |   |

LAS VEGAS, NEVADA    [WWW.PRIDECARPETS.COM](http://WWW.PRIDECARPETS.COM)

Colors are approximate refer to actual sample. All image and content rights are reserved.







Style: TV-149-200 Hoover Dam  
Repeat: 73.2x73.2  
Color: Custom

Order# 45706 | Injection Dyed

YARN COLORS

- |   |           |   |           |
|---|-----------|---|-----------|
| A | Black     | E | CRIMSOM   |
| B | ACAJOU    | F | RED CLAY  |
| C | BLUE FURY | G | SAGUARO   |
| D | CHINA SEA | H | DANDELION |

LAS VEGAS, NEVADA    WWW.PRIDECARPETS.COM

Colors are approximate refer to actual sample. All image and content rights are reserved.







Style: TV-712 Riviera\_LVC  
Repeat: 73.16x73.16  
Color: Custom

Order# 50326 | Injection Dyed

YARN COLORS

|   |   |     |   |   |     |   |   |     |
|---|---|-----|---|---|-----|---|---|-----|
| A |  | O48 | E |  | B27 | I |  | P33 |
| B |  | H45 | F |  | C18 | J |  | E1  |
| C |  | C45 | G |  | D15 |   |   |     |
| D |  | H43 | H |  | L14 |   |   |     |

LAS VEGAS, NEVADA    WWW.PRIDECARPETS.COM

Colors are approximate refer to actual sample. All image and content rights are reserved.







Style: TV-712-001 Riviera 12ft  
Repeat: 146.32x146.32  
Color: Custom

Order# 51098 | Injection Dyed

YARN COLORS

- |   |       |   |       |   |       |
|---|-------|---|-------|---|-------|
| A | ■ O48 | E | ■ J27 | I | ■ L14 |
| B | ■ H45 | F | ■ C48 | J | ■ E1  |
| C | ■ C45 | G | ■ C18 |   |       |
| D | ■ H43 | H | ■ C16 |   |       |

LAS VEGAS, NEVADA WWW.PRIDECARPETS.COM

Colors are approximate refer to actual sample. All image and content rights are reserved.







Style: TV-732  
Repeat: 72x72  
Color: Custom

Order# 66325 | Injection Dyed

YARN COLORS

|   |   |   |   |   |   |
|---|---|---|---|---|---|
| A |  k43 | E |  a41 | I |  g9  |
| B |  l19 | F |  g22 | J |  a60 |
| C |  k4  | G |  d22 |   |   |
| D |  k8  | H |  k40 |   |   |

LAS VEGAS, NEVADA WWW.PRIDECARPETS.COM

Colors are approximate refer to actual sample. All image and content rights are reserved.







Style: TV-724-200 Gambler Man  
Repeat: 73.2x73.2  
Color: Custom

Order# 44649 | Injection Dyed

YARN COLORS

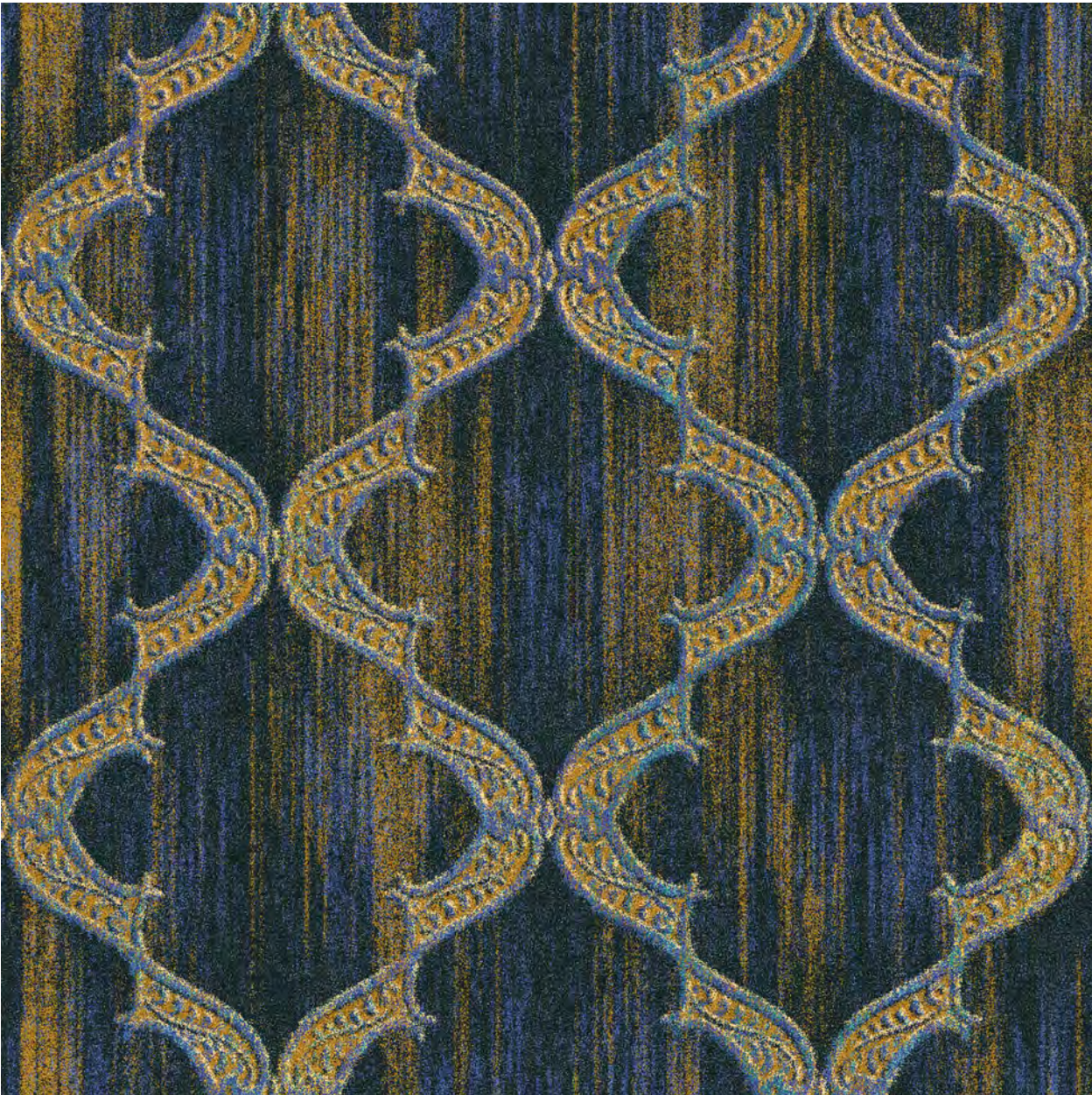
- |   |           |   |           |   |             |
|---|-----------|---|-----------|---|-------------|
| A | Black     | E | BLUE FURY | I | RED CLAY    |
| B | GARNET    | F | VALOR     | J | SAGUARO     |
| C | ACORN     | G | CRIMSOM   | K | DANDELION   |
| D | CHINA SEA | H | ACORN     | L | MOCHA CREAM |

LAS VEGAS, NEVADA WWW.PRIDECARPETS.COM

Colors are approximate refer to actual sample. All image and content rights are reserved.







Style: TV-849  
Repeat: 36x36  
Color: Custom

Order# 65446 | Injection Dyed

YARN COLORS

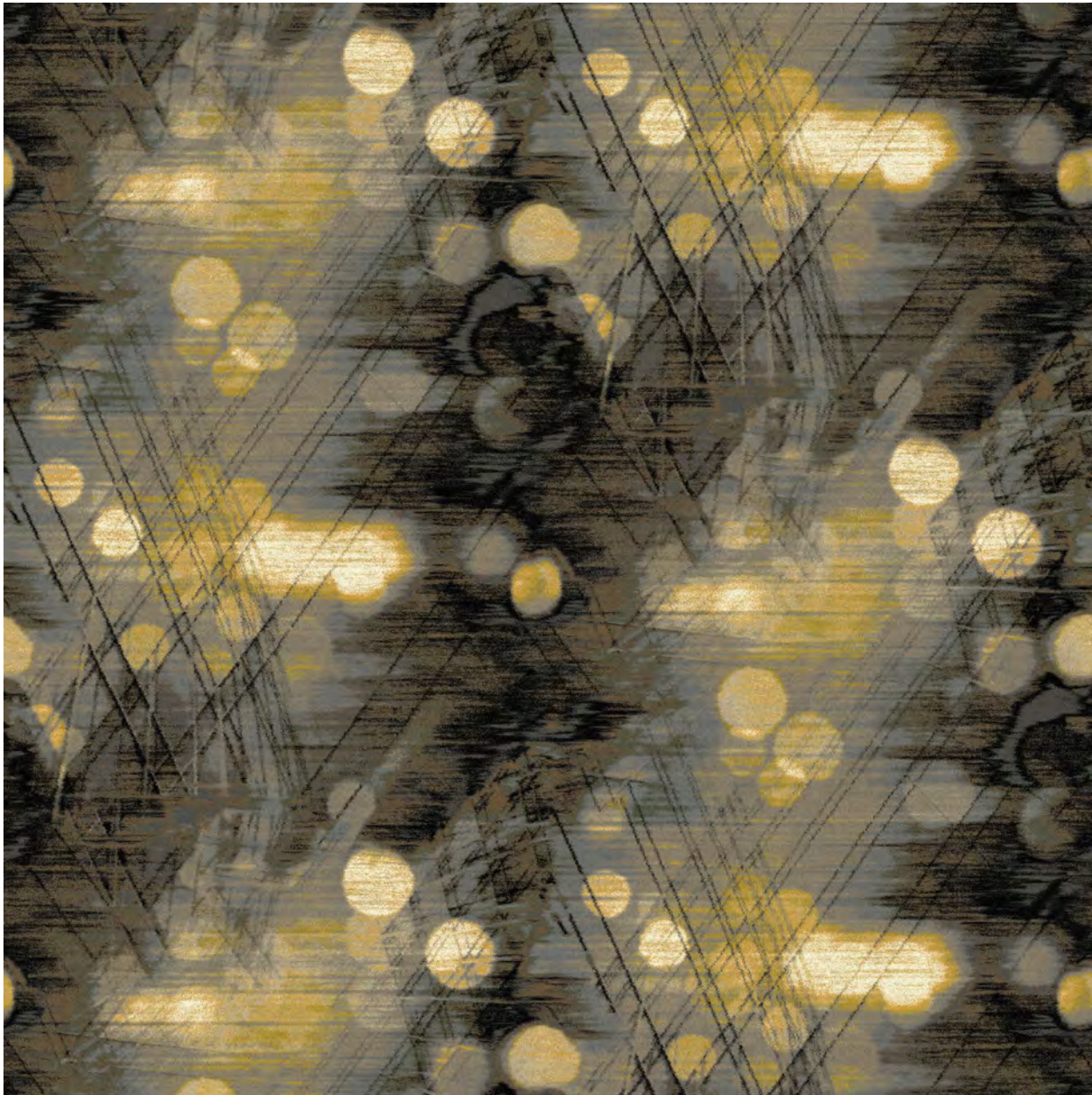
|   |   |   |   |   |   |
|---|---|---|---|---|---|
| A |  c43 | E |  b41 | I |  g40 |
| B |  e42 | F |  l23 | J |  g39 |
| C |  d44 | G |  e23 | K |  d48 |
| D |  b14 | H |  i46 | L |  b23 |

LAS VEGAS, NEVADA    WWW.PRIDECARPETS.COM

Colors are approximate refer to actual sample. All image and content rights are reserved.







Style: TVKM-2149  
Repeat: 144x108.08  
Color: Custom

Order# 70800 | Injection Dyed

YARN COLORS

|   |       |   |     |   |     |
|---|-------|---|-----|---|-----|
| A | Black | E | h54 | I | e51 |
| B | g54   | F | l56 | J | e15 |
| C | c56   | G | f52 | K | e59 |
| D | j54   | H | f17 | L | l60 |

LAS VEGAS, NEVADA    WWW.PRIDECARPETS.COM

Colors are approximate refer to actual sample. All image and content rights are reserved.







Style: TV-g13  
Repeat: 72x72  
Color: Custom

Order# 55657 | Injection Dyed

YARN COLORS

|   |       |   |     |   |     |   |     |
|---|-------|---|-----|---|-----|---|-----|
| A | Black | E | g42 | I | l21 | M | d22 |
| B | l8    | F | k4  | J | c22 | N | e50 |
| C | d7    | G | j5  | K | c17 |   |     |
| D | d18   | H | j6  | L | b51 |   |     |

LAS VEGAS, NEVADA WWW.PRIDECARPETS.COM

Colors are approximate refer to actual sample. All image and content rights are reserved.







Style: TV-g17\_half-drop  
Repeat: 72x72  
Color: Default

Injection Dyed

YARN COLORS

- |   |       |   |     |   |     |
|---|-------|---|-----|---|-----|
| A | Black | E | j5  | I | g51 |
| B | j28   | F | j6  |   |     |
| C | c44   | G | l21 |   |     |
| D | k4    | H | d22 |   |     |

LAS VEGAS, NEVADA WWW.PRIDECARPETS.COM

Colors are approximate refer to actual sample. All image and content rights are reserved.







Style: TVKM-2147  
Repeat: 144x144  
Color: Custom

Order# 70773 | Injection Dyed

YARN COLORS

|   |       |   |     |   |     |
|---|-------|---|-----|---|-----|
| A | Black | E | l56 | I | e59 |
| B | c56   | F | f17 | J | l60 |
| C | j54   | G | e51 |   |     |
| D | h54   | H | e15 |   |     |

LAS VEGAS, NEVADA WWW.PRIDECARPETS.COM

Colors are approximate refer to actual sample. All image and content rights are reserved.







Style: TV-22511-8  
Repeat: 144x144  
Color: Custom

Order# 74875 | Injection Dyed

YARN COLORS

|   |     |   |     |   |     |   |     |
|---|-----|---|-----|---|-----|---|-----|
| A | g5  | E | a52 | I | k21 | M | i14 |
| B | l17 | F | h7  | J | c22 | N | i13 |
| C | c5  | G | k3  | K | f19 | O | e60 |
| D | c4  | H | g8  | L | c51 |   |     |

LAS VEGAS, NEVADA WWW.PRIDECARPETS.COM

Colors are approximate refer to actual sample. All image and content rights are reserved.





# PROPER CARPET MAINTENANCE: SAFEGUARDING YOUR INVESTMENT

By Tony Wideen

Professionals in the carpet industry know the right casino carpet is a defining factor when it comes to creating a distinct atmosphere and memorable first impression. But carpeting has to do with more than simply looking good when it's new. Beyond leaving people with an enjoyably vivid visual experience, carpeting has to be functional, properly maintained, and capable of demonstrating a high degree of appearance retention during its use.

For years hotel/casino properties have been plagued by needlessly high costs associated with premature carpet replacement due to the unnecessary wear and tear that results from improper maintenance of carpet fibers. The sales pitch for a spin bonnet machine that is a quick, low cost way to clean the surface of the carpet, doesn't explain that the machine also tears the carpet fibers apart quickly on any cut-pile carpet.



Poor maintenance causes carpet deterioration, which can lead to injury. Several months ago, a Las Vegas property was sued after a customer slipped and fell in a casino lounge. This carpet was installed in 2005 and the installer of the carpet was brought into the lawsuit as well. Please take note that if you have any bubbles or lines pushing up from the floor, your carpet may have delaminated. When this occurs there is separation from either the carpet and it's backing or the carpet and pad, caused by a breakdown of the glue or latex that keeps the carpet and backing together.

It's easy to put the blame for premature deterioration of carpeting on maintenance staffs that don't take the necessary pains to care for the product properly, but in most cases, the staff isn't negligent in their care of the carpet. The problem usually stems from a lack of proper training.

Carpet is given its warranty protection by the carpet manufacturer, not by the cleaning equipment manufacturer. But, it's the cleaning equipment manufacturer that has become responsible for training the maintenance personnel that play such an important role in safeguarding the carpet's integrity. In many instances, inferior cleaning equipment is being purchased and used solely because it can save time and labor, and it could be destroying the carpet's original appearance in a very short period of time. Thus the cycle of inadequate maintenance that leads to unnecessary replacement costs. In the competitive hotel/casino market, hospitality users can't afford to keep a carpet in place that no longer offers that vivid visual appeal they desired.

Managers need to be informed of the kind of training necessary for staff to learn more about carpet fiber itself and carpet construction. It is important to learn about the potentially harmful affects various types of cleaning equipment have on the carpet. When they have the knowledge about the fibers carpets are made of – wool, nylon, polypropylene, polyester or a blend of these materials, the various types of construction (woven, tufted, CYP, hand rugs, made in cut-pile, loop or cut-loop styles) used in conjunction with the dying processes (piece, skein, dye injection or solution dyed) –

they can maintain these products much more effectively. This will keep the carpet's performance and appearance retention at its peak much longer, thus saving substantial dollars in replacement costs and eliminating the problem of having to live with a dull appearance until future budgets are approved. Specialized training can only come from the real source of information about the carpet itself – the carpet manufacturers.

**Several important facts to keep in mind:**

- Equipment manufacturers and distributors don't warrant the carpet – the carpet manufacturers do.
- The use of improper equipment will result in a much quicker loss of color.
- Over cleaning, as well as using excess water, causes delamination of the carpet.
- High speed equipment destroys tip definition of cut-pile carpet quickly.
- Worthless equipment gets only surface dirt off and grinds in the rest.
- Improper use decreases performance and increases replacement time significantly.
- Poor maintenance voids every manufacturer's warranty.

Taking a more proactive approach, from installation forward, includes making sure managers are aware of how to maintain carpets properly. By offering and meeting the training needs of maintenance/housekeeping staffs, the casino saves on labor costs, improves appearance retention and adds years of service to installed carpet.

The Carpet & Rug Institute encourages facility managers, designers, maintenance personnel and any others responsible for commercial carpet maintenance to develop and sustain a complete maintenance program for all commercial facilities. The following maintenance information is meant as a guideline since casinos are open long hours and much more difficult to clean than a business office building open ten hours per day.

**MAINTENANCE PLAN**

Plan a maintenance program before installation so such factors as budget, personnel and areas of special consideration can be taken into account. Maintenance personnel are advised to:

- Obtain a detailed floor plan of facility.
- Identify areas of heavy soiling:
  - Track-off Regions: areas where carpet collects tracked- in soil from the outdoors or from hard-surfaced floors. Track off regions average 90 sq. ft. (6 x 15) at building entrances, 10 sq. ft. (2 x 5) at internal doorways, and 40 sq. ft. (5 x 8) in corridors six feet wide.
  - Congested Channels: a concentrated channel of foot traffic, such as a doorway, stairwell or drinking fountain area. A congested channel averages three feet around a doorway to 10 feet around elevators.
  - Traffic Lanes: areas with the largest amount of foot traffic.

A complete and effective program should include three maintenance categories: preventative, daily and periodic.

**1. Preventative maintenance measures to reduce the effects of soil:**

- Entry Mats: placed in entryways and elevators, they will collect dirt before it reaches the carpeted area. Assure that the mats cover the distance of several footsteps.
- Color Selection: choose color appropriate to traffic areas and local soil conditions. Medium colors, tweeds and patterned carpets hide soil, while lighter colors mask fading.



## 2. Daily maintenance:

• Vacuuming is the most important and most cost-effective element of an efficient maintenance program. Vacuuming can remove more than 80 percent of dry soil on a daily basis. Vacuuming should be scheduled according to the amount of potential soil buildup of a particular area. The general recommendations for vacuuming frequency are as follows:

- Heavy traffic areas: daily
- Medium traffic areas: twice weekly
- Light traffic areas: once or twice weekly

• Vacuuming Equipment: Two types of vacuum cleaning equipment are available for daily maintenance of commercial installations. They are:

- Heavy-duty, wide track machines for wide, open areas. These should have powerful suction and an enclosed, high-efficiency particulate filtration bag and be equipped with adjustable cylindrical brushes to whip embedded soil to the surface.
- Industrial versions of the domestic upright for tighter areas. Should have the same features and should have hose and wand attachments for hard-to-reach areas. A backpack vacuum with a high airflow and high-efficiency filtration provides increased productivity.

• Periodic pile brushing with a pile lifter vacuum pre-conditions carpet and removes dry, deeply embedded soil from high traffic areas. This can be especially helpful prior to carpet cleaning.

## 3. Extraction Cleaning:

• Periodically scheduled extraction cleaning will remove accumulated soil not removed by regular vacuuming and spot removal. The Carpet and Rug Institute (CRI) suggests a monthly or as needed cleaning of transition areas, track-off regions and congested channels. Cleaning methods include:

- Absorbent compound (dry extraction)
- Absorbent pad or bonnet (don't ever use on casino, restaurant or hotel carpet)
- Dry foam (works for casinos best)
- Hot water extraction (steam cleaning)
- Rotary shampoo cleaning (don't ever use on casino, restaurant or hotel carpet)

### **NOTE: Use methods recommended by carpet manufacturer**

Damage from spills can be minimized by immediate action. As soon as a spill occurs, blot with a clean, white, absorbent towel and repeat until the spill is fully absorbed. The CRI recommends using a professional spot removal kit, available from janitorial businesses. These kits contain a variety of cleaning agents, application materials as well as spot removal instructions. Be sure to follow instructions and take proper precautions when using cleaning agents. Lightweight portable extractors are available for more efficient removal of spills. These portable extractors assist in thoroughly removing spills, rinsing cleaning solutions, and extracting wet spills. It is important to adhere to manufacturer's spot removal instructions to prevent voiding existing warranties. Failure to follow these instructions could result in damaged carpet fibers.

Simple rules to be safe are as follows: vacuum, vacuum, vacuum, spot clean as needed. Never buy or use any type of spin-bonnet. Use a quality steam extractor and clean as little as possible.





# THANK YOU

## WE WOULD LOVE TO SERVE YOUR BUSINESS!

Pride Carpets and Casino Carpets are the leading online casino, hotel and entertainment carpet manufacturers, as well as your true consulting partners. Our mission is to help you maximize your budget, while providing amazing customer service and quality carpets that enhance your property's visual appeal.

**PRIDE** Hotel, Casino &  
Entertainment  
Carpets

### **Pride Carpets**

702-929-6586  
info@pridecarpets.com  
www.pridecarpets.com

---

**CASINO**  
CARPETS.COM

### **Casino Carpets**

702-929-6586  
info@casinocarpets.com  
www.casinocarpets.com

